

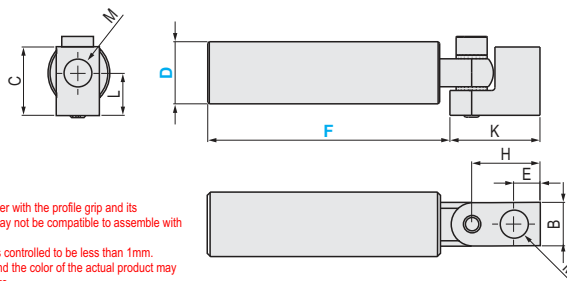
NEW

ELBOW ARM FOR SUCTION CUP / EXTENSION TUBE

ELBOW ARM FOR SUCTION CUP / EXTENSION TUBE

Elbow Arm for Suction Cup

MSEAV



- ⓘ This product is used together with the profile grip and its components. Note that it may not be compatible to assemble with other products.
- ⓘ When tightening, the gap is controlled to be less than 1mm.
- ⓘ The surface is anodized, and the color of the actual product may vary from the product picture.

M Material	S Surface treatment
Aluminum product	Anodizing

Part Number	D	F	B	C	E	H	K	L	M	Weight (g)
MSEAV	10	45	10	16.5	5.5	22	19	11	M5	18
	10	90	10	16.5	5.5	22	19	11	M5	27
	14	60	14	22	8.5	22	29	13.5	G1/8"	33
	14	120	14	22	8.5	22	29	13.5	G1/8"	50
	20	75	20	27	12	28	38	15	G1/4"	75
	20	78	14	22	8.5	22	29	13.5	G1/8"	60
	20	150	20	27	12	28	38	15	G1/4"	115
	20	153	14	22	8.5	22	29	13.5	G1/8"	100

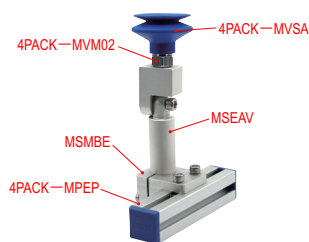


Order

Part Number — D — F
MSEAV — 20 — 78



Example



Days to Ship

Quotation

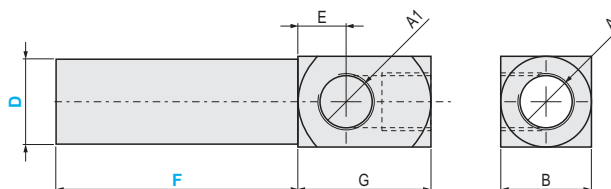


Price

Quotation

Extension Tube

MSVE



- ⓘ This product is used together with the profile grip and its components. Note that it may not be compatible to assemble with other products.
- ⓘ When tightening, the gap is controlled to be less than 1mm.
- ⓘ The surface is anodized, and the color of the actual product may vary from the product picture.

M Material	S Surface treatment
Aluminum product	Anodizing

Part Number	D	F	A1	A2	B	E	F	Weight (g)
MSVE	10	30	M5	M5	11	6	16	10
	10	60	M5	M5	11	6	16	13
	10	90	M5	M5	11	6	16	17
	12	30	M5	M5	13	7	17	12
	12	60	M5	M5	13	7	17	15
	12	90	M5	M5	13	7	17	19
	14	40	G1/8	G1/8	15	8	22	17
	14	80	G1/8	G1/8	15	8	22	25
	14	120	G1/8	G1/8	15	8	22	32
	20	50	G1/8	G1/8	20	8	23	40
	20	100	G1/8	G1/8	20	8	23	60
	20	150	G1/8	G1/8	20	8	23	75

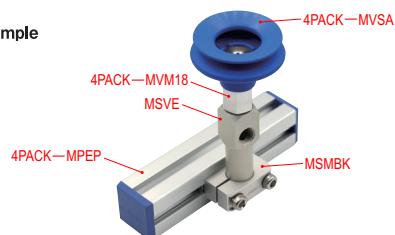


Order

Part Number — D — F
MSVE — 10 — 30



Example



Days to Ship

Quotation



Price

Quotation