

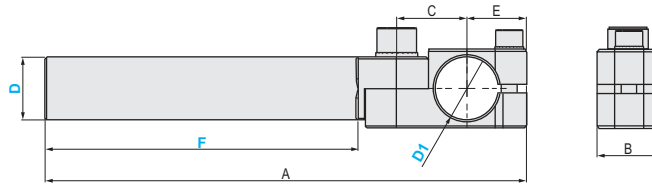
**NEW**

**ELBOW ARM**  
**ELBOW ARM**

■ **Elbow Arm**



**MSEA**



<b>M</b> Material	<b>S</b> Surface treatment
Aluminum product	Anodizing

- ⓘ This product is used together with the profile grip and its components. Note that It may not be compatible to assemble with other products.
- ⓘ When tightening, the gap is controlled to be less than 1mm.
- ⓘ The surface is anodized, and the color of the actual product may vary from the product picture.

Part Number	D1	D	F	A	B	C	E	Weight (g)
<b>MSEA</b>	10	10	60	92.8	10	12.5	13	20
	12	12	60	98	12	12.5	16	22
	14	14	40	82	14	16.5	16	32
	14	14	80	121.8	14	16.5	16	42
	14	14	120	162	14	16.5	16	50
	20	20	50	104	20	22.5	19	70
	20	20	100	153.8	20	22.5	19	90
	20	20	150	204	20	22.5	19	120
	30	30	80	160	30	34.8	27	235
	30	30	140	220	30	34.8	27	300
	30	30	200	280	30	34.8	27	360



Order

Part Number	D1	D	F
MSEA	10	10	60



Days to Ship

**Quotation**



Price

**Quotation**



Example

