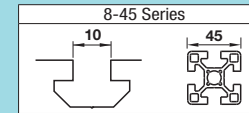


# 8-45 Series Aluminum Extrusions 45, 90mm Square

1 Slot



Fixing Parts			Others	
Brackets	Joints	Nuts	Extrusion End Caps	Alterations
P.717 ~ P.730	P.731 ~ P.736	P.739 ~ P.748	P.749	P.781 ~ P.794

For non-catalog standard products, see P.131.

For non-catalog standard products, see P.131.

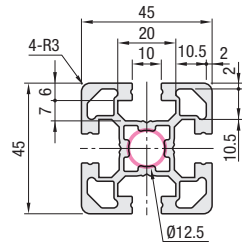
Features: Standard extrusions for equipment bases, etc.



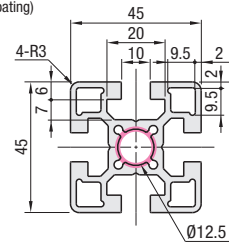
Type		Material	Surface Treatment
Configurable Length	Fixed Length		
GNFS8	KGNFS8	A6063S-T6	Clear Anodize
GFS8	KGFS8	A6061SS-T6 Equivalent	
NEFS8	KNEFS8	A6063S-T5	
NFSL8	KNFSL8		
EFS8	KEFS8	A6N01SS-T5	Black Anodize
HFS8	KHFS8		
HFSL8	KHFSL8		
EFSB8	KEFSB8		Clear Coating (Anodize + Clear Paint)
HFSB8	KHFSB8		
CAF8	KCAF8		

Cut surface and altered parts are not surface treated.

NEFS8-4545  
EFS8-4545  
EFSB8-4545  
(Black Anodize)

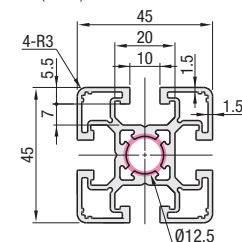


HFS8-4545  
HFSB8-4545 (Black Anodize)  
CAF8-4545 (Clear Coating)

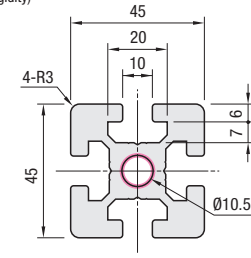


NFSL8-4545  
HFSL8-4545 (Light Type)

For Slot Covers for HFSLF8-4545, use HSCA8 (P.799).



GNFS8-4545 (High Rigidity)  
GFS8-4545 (High Rigidity)



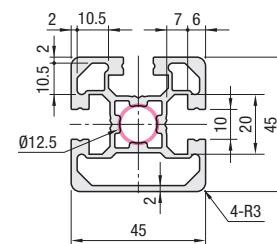
Features: 1-slot Aluminum 45mm Square Extrusions with a Flat Side.



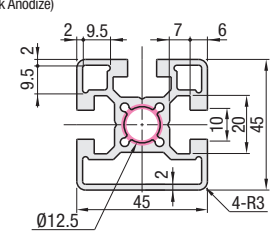
Type		Material	Surface Treatment
Configurable Length	Fixed Length		
GFSF8	KGFSF8	A6061SS-T6 Equivalent	Clear Anodize
NEFSF8	KNEFSF8	A6063S-T5	
EFSF8	KEFSF8	A6N01SS-T5	Black Anodize
HFSF8	KHFSF8		
HFSLF8	KHFSLF8		
HFSFB8	KHFSFB8		

Cut surface and altered parts are not surface treated.

NEFSF8-4545  
EFSF8-4545

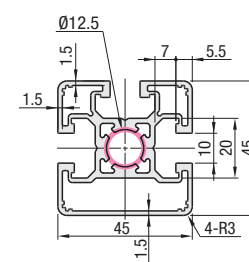


HFSF8-4545  
HFSFB8-4545 (Black Anodize)

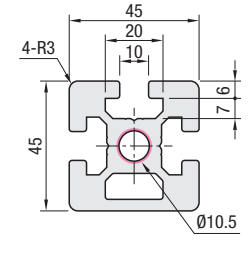


HFSLF8-4545 (Light Type)

For Slot Covers for HFSLF8-4545, use HSCA8 (P.799).



GFSF8-4545 (High Rigidity)



## Configurable Length Extrusions

Part Number	L 0.5mm Increment	Mass kg/m	Sectional Area mm <sup>2</sup>	Cross Sectional Moment of Inertia mm <sup>4</sup>		Unit Price (Less than 300mm) 1 ~ 9 pc(s).	Volume Discount Rate Less Than 300mm		Unit Price/m (300mm or More) 1 ~ 9 pc(s).	Volume Discount Rate 300mm or More	
				lx	ly		10-49	50-160		10-49	50-160
NEFS8	4545 50-4000 For some product types, up to 6,000mm length is available. For details, refer to "Information about Non-FA Catalog Standard Products" (P.131) and contact the relevant person in charge in MISUMI. Some extrusions are not applicable.	1.93	713	15.42x10 <sup>4</sup>	15.42x10 <sup>4</sup>						
EFS8		2.1	777	15.13x10 <sup>4</sup>	15.13x10 <sup>4</sup>						
EFSB8 (Black Anodize)											
HFS8											
HFSB8 (Black Anodize)											
CAF8 (Clear Coating)											
NFSL8			1.7	628	11.73x10 <sup>4</sup>	11.73x10 <sup>4</sup>					
HFSL8 (Light Type)			3.16	1171	23.64x10 <sup>4</sup>	23.64x10 <sup>4</sup>					
HGNFS8 (High Rigidity)											
GFS8 (High Rigidity)											

## Fixed Length Extrusions (Effective Length 4000mm P.552)

Part numbers beginning with the character "K" indicate Fixed Length Type Aluminum Extrusion.

Part Number	L mm	Sectional Area mm <sup>2</sup>	Cross Sectional Moment of Inertia mm <sup>4</sup>		Unit Price 1 ~ 9 pc(s).	Volume Discount Rate 10-20
			lx	ly		
KNEFS8	4545 4000 (Effective Length)	713	15.42x10 <sup>4</sup>	15.42x10 <sup>4</sup>		
KEFS8						
KEFSB8 (Black Anodize)						
KHFS8		777	15.13x10 <sup>4</sup>	15.13x10 <sup>4</sup>		
KHFSB8 (Black Anodize)						
KCAF8 (Clear Coating)		628	11.73x10 <sup>4</sup>	11.73x10 <sup>4</sup>		
KNFSL8						
KHFSL8 (Light Type)		1171	23.64x10 <sup>4</sup>	23.64x10 <sup>4</sup>		
KGNFS8 (High Rigidity)						
KGFS8 (High Rigidity)						

When L<300, the unit prices indicated in the table apply regardless of the length.  
When L≥300mm, total prices are calculated as follows:  
Unit Price/m x Specified O.A.L. = Sales Price

Ordering Example	Part Number	L
	HFS8-4545	800
	KHFS8-4545	4000

Alterations are available for Configurable Length Type Aluminum Extrusions. For details of alterations, see P.781.

## Configurable Length Extrusions

Part Number	L 0.5mm Increment	Mass kg/m	Sectional Area mm <sup>2</sup>	Cross Sectional Moment of Inertia mm <sup>4</sup>		Unit Price (Less than 300mm) 1 ~ 9 pc(s).	Volume Discount Rate Less Than 300mm		Unit Price (300mm or More) 1 ~ 9 pc(s).	Volume Discount Rate 300mm or More	
				lx	ly		10-49	50-160		10-49	50-160
NEFSF8	4545 50-4000 For some product types, up to 6,000mm length is available. For details, refer to "Information about Non-FA Catalog Standard Products" (P.131) and contact the relevant person in charge in MISUMI. Some extrusions are not applicable.	1.83	677	14.58x10 <sup>4</sup>	15.00x10 <sup>4</sup>						
EFSF8		1.97	730	13.88x10 <sup>4</sup>	14.58x10 <sup>4</sup>						
HFSF8											
HFSFB8 (Black Anodize)											
HFSLF8 (Light Type)			1.60	590	10.88x10 <sup>4</sup>	11.33x10 <sup>4</sup>					
HFSFB8			3.16	1172	24.54x10 <sup>4</sup>	23.36x10 <sup>4</sup>					
GFSF8											

## Fixed Length Extrusions (Effective Length 4000mm P.552)

Part numbers beginning with the character "K" indicate Fixed Length Type Aluminum Extrusion.

Part Number	L mm	Sectional Area mm <sup>2</sup>	Cross Sectional Moment of Inertia mm <sup>4</sup>		Unit Price 1 ~ 9 pc(s).	Volume Discount Rate 10-20	
			lx	ly			
KNEFSF8	4545 4000 (Effective Length)	677	14.58x10 <sup>4</sup>	15.00x10 <sup>4</sup>			
KEFSF8							
KHFSF8		730	13.88x10 <sup>4</sup>	14.58x10 <sup>4</sup>			
KHFSFB8 (Black Anodize)							
KHFSLF8 (Light Type)		590	10.88x10 <sup>4</sup>	11.33x10 <sup>4</sup>			
KGFSF8							
			1172	24.54x10 <sup>4</sup>	23.36x10 <sup>4</sup>		

When L<300, the unit prices indicated in the table apply regardless of the length.  
When L≥300mm, total prices are calculated as follows:  
Unit Price/m x Specified O.A.L. = Sales Price

Ordering Example	Part Number	L
	HFSF8-4545	800
	KHFSF8-4545	4000

Alterations are available for Configurable Length Type Aluminum Extrusions. For details of alterations, see P.781.