

For Load Rating, C-VALUE components are different from the similar products. (For details, see P.772.)
When considering adopting C-VALUE parts, select them by comparing against similar products in the specifications. P.777

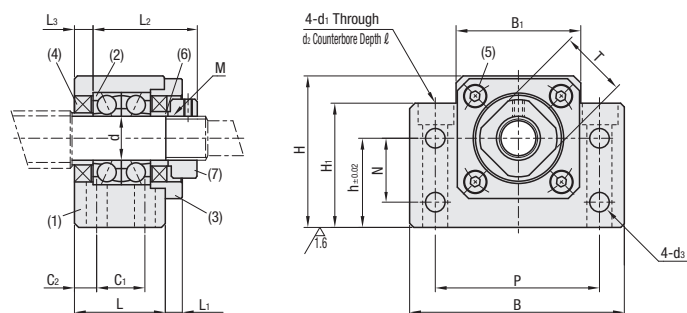


Type	Material	Surface Treatment
Fixed Side only	(1)(3)	(6)(7)
Fixed Side and Support Side SET	(1)(3)	(6)(7)
C-BSFW	C-BSFW-SET	S45C SS400 Black Oxide

Component Details

Number	Part Name	Qty.
(1)	Bearing Housing	1
(2)	Overseas-made angular contact bearing Grade 5	1 Set
(3)	Cover	1
(4)	Oil Seal	2
(5)	Hex Socket Head Cap Screw	4
(6)	Collar	2
(7)	Bearing Nut (with Set Piece)	1

- d=6 and 8 come with one Oil Seal (4).
- Do not disassemble (1), (2), (3), (4) and (5) as they must remain as an assembled unit.
- When used together with a MISUMI ball screw, there is one support unit accessory collar spare.



Part Number		Support Side SET	d	L	L1	L2	L3	B	H	h	B1	H1	P	N	C1	C2	d1	d2	d3	ℓ	M (Fine)	T	Oil Seal Applicable Shaft Dia.	C-BSFW	C-BSFW-SET
Type	No.																							Unit Price	Unit Price
C-BSFW	10S	-SET (Only when purchased in Sets)	10	25	5	29	5	60	39	22	34	32.5	46	15	13	6	6.6	11	5.5	5	M10x1.0	16	12		
	10		12					43	25	35				1.5	M12x1.0					19	14				
	12		15	27	6	32	6	70	48	28	40	38	54	18	15	6.5	M15x1.0	22	15	20					
	15		20	35	8	43	8	88	60	34	52	50	70	22	19	8	9	14	6.6	8.5	M20x1.0	30	27.5		
	20		25	42	12	54	9	106	80	48	64	70	85	33	22	10	11	17.5	9	11	M25x1.5	35	31.5		

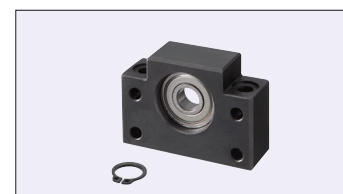
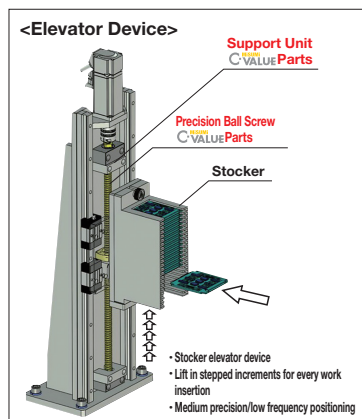


Ordering Example
Part Number
C-BSFW15 (Fixed-side single type)
C-BSFW15-SET (SET part type)

- For details of Bearings, Included Collars and Bearing Nuts in addition to mounting interface accuracies of Support Units, see P.777.
- Ball Screw Compatibility Chart P.774
- * Store Accessories with care since they are required when assembling.
- No.15 and No.20 cannot be used with MISUMI ball screws. For the applicable ball screws manufactured by other companies, see P.776, "Ball Screw / Support Unit Mapping Table - Ball Screw Shaft Diameters: Ø20, Ø28, Ø30 and Ø32."



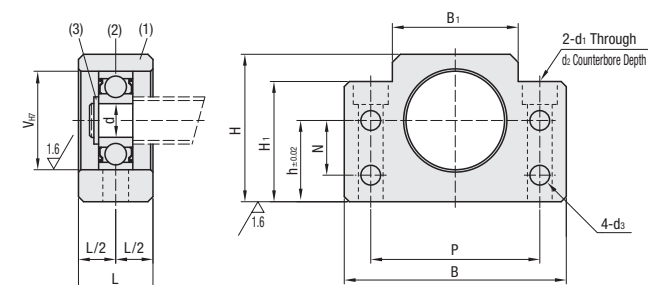
Example



Type	Material	Surface Treatment
C-BUFN	S45C	Black Oxide

Component Details

Number	Part Name	Qty.
(1)	Housing	1
(2)	Overseas-made radial bearing	1
(3)	Retaining Ring (STWN)	1



Part Number	d	L	B	H	h	B1	H1	P	N	V	d1	d2	d3	ℓ	Bearing Part Number	Retaining Ring	C-BUFN
Type	No.																Unit Price
C-BUFN	10	8	60	39	22	34	32.5	46	15	22	6.6	11	5.5	5	B608ZZ	STWN8	
	12	10	70	48	28	40	38	54	18	26	9	14	6.6	1.5	B6000ZZ	STWN10	
	15	15	88	60	34	52	50	70	28	32	11	17.5	9	6.5	B6002ZZ	STWN15	
	20	20	106	80	48	64	70	85	33	42	14	17.5	9	8.5	B6004ZZ	STWN20	
	25	25	106	80	48	64	70	85	33	52	14	17.5	9	11	B6205ZZ	STWN25	

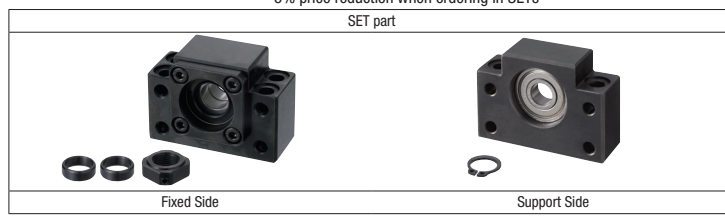


Ordering Example
Part Number
C-BUFN15 (Support side, separate item)

- For details of Bearings, Included Collars and Bearing Nuts in addition to mounting interface accuracies of Support Units, see P.777.
- Ball Screw Compatibility Chart P.774
- * Store Accessories with care since they are required when assembling.
- No.15, 20 and 25 cannot be used with MISUMI ball screws. For the applicable ball screws manufactured by the other companies, see P.776, "Ball Screw / Support Unit Mapping Table - Ball Screw Shaft Diameters: Ø20, Ø28, Ø30, Ø32 and Ø36."

SET part overview

For customers using in conjunction with fixed side and support side MISUMI recommends a SET, which allows the fixed side and support side to be ordered as one set.
5% price reduction when ordering in SETs



<SET parts>

SET Part Number	Fixed Side Part Number	Support Side Part Number
C-BSFW10-SET	C-BSFW10	C-BUFN10
C-BSFW10S-SET	C-BSFW10S	C-BUFN10
C-BSFW12-SET	C-BSFW12	C-BUFN12
C-BSFW15-SET	C-BSFW15	C-BUFN15
C-BSFW20-SET	C-BSFW20	C-BUFN20
C-BSFW25-SET	C-BSFW25	C-BUFN25