

[Simplified Adjustments] XY-Axis, Feed Screw, Key Guide Units  
C-MISUMI VALUE [Standard] XY-Axis Dovetail Slide, Feed Screw

Compared to  
similar products  
28% OFF Max.

C-MISUMI VALUE

[Standard] XY-Axis Dovetail Slide, Feed Screw  
Hex Wrench Drive

Compared to  
similar products  
28% OFF Max.

■Features: Have the top and bottom surfaces clamped with screws. Has a very low profile (height: 16mm) and thus, are suitable for adjustment on limited spaces.

■XY-Axis, Low Profile



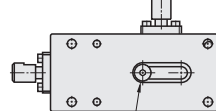
X-Axis P.1959

RoHS 10

●One Point

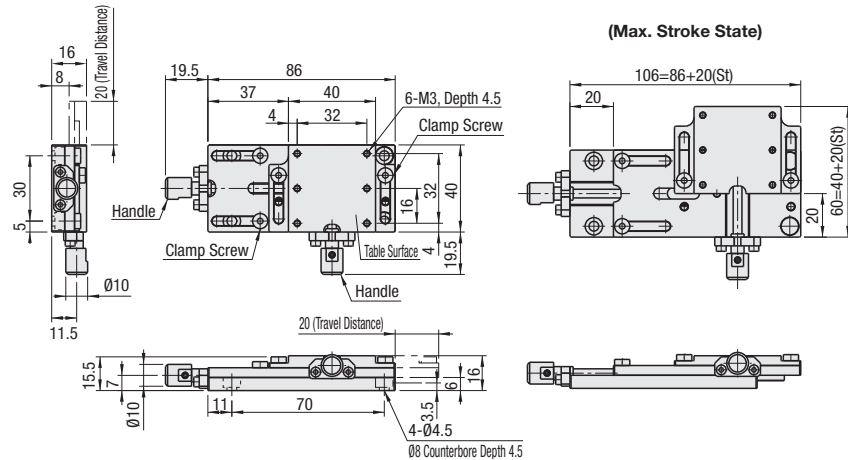
A stepped screw is mounted onto the back face to prevent the table from being pulled up.

Bottom View



Stepped Screw

XYKYF40



Main Body		Feed Screw		Clamp Screw	
M Material	S Surface Treatment	M Material	S Surface Treatment	M Material	S Surface Treatment
Aluminum Alloy	Black Anodize	Steel	Electroless Nickel Plating	Steel	Black Oxide

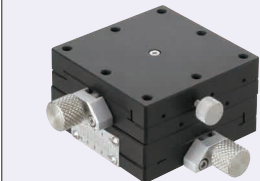
Part Number		Table Surface Size (mm)	Travel Distance (mm)	Travel per Rotation (mm)	Clamp Screw	Load Capacity (N)	Weight (kg)	Unit Price
Type	No.	Top Surface	Bottom Surface					
XYKYF	40	40x40	20	20	0.7	M4	19.6	0.15

Ordering Example  
Part Number  
XYKYF40

Similar Products Comparison Points | Travel Accuracy Straightness 50μm

Similar Product Pages P.1998

■XY-Axis

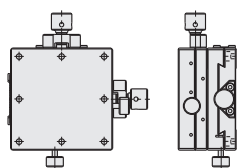


X-Axis P.1960

RoHS 10

Clamp Position Change

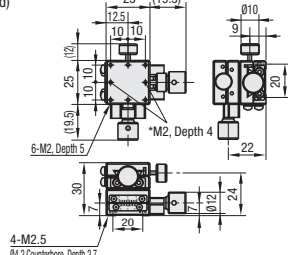
XYFES□-R (Right/Left Reversed)



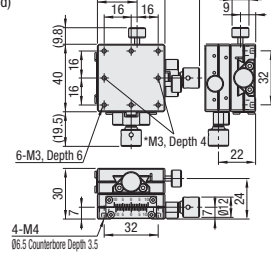
\*The depth will be short due to the stage shape.

See the CAD data for details.

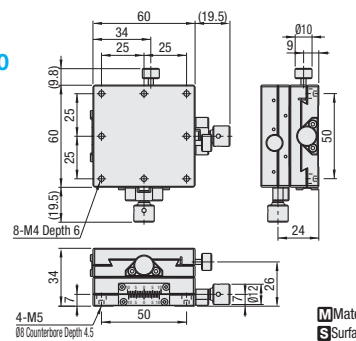
XYFES25  
(Standard)



XYFES40  
(Standard)



XYFES60  
(Standard)



M Material: Aluminum Alloy  
S Surface Treatment: Black Anodize

■XY-Axis Stages ●High Precision Stage Existing Product: XYEG (P.1998)

Part Number		Stage Surface (mm)	Travel Distance (mm)	Travel per Rotation (mm)	Load Capacity (N)	Travel Accuracy Straightness	Weight (kg)	Unit Price
Type	No.	Clamp Position						
XYFES	25	No Symbol (Standard)	25x25	±5	0.5	50μm	0.09	
	40	R (Right/Left Reversed)	40x40	±7			0.16	
	60		60x60	±8			0.36	

Resolution (Vernier Scale Indication): 0.1mm/division

Extension Cover HDEXT12-□ (sold separately): Ø12 knobs can be extended by installing the cover. P.2068

(Caution) Please note that increased knob diameter may interfere with the stage mounting base surfaces.

Ordering Example  
Part Number  
XYFES40

Similar Products Comparison Points | Travel Accuracy Straightness 50μm

Similar Product Pages P.1998

■Features: No knob is required since a hex wrench is used to feed the stage, making for a space saving form factor. Unintended position changes can be prevented since the stage cannot be operated without a hex wrench.

■XY-Axis, Hex Wrench Drive  
(Lead 0.5mm)



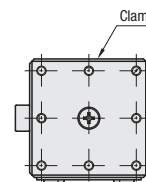
X-Axis: P.1960

RoHS 10

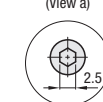
See the CAD data for details.

Clamp Position Change

XYFEES□-R (Right/Left Reversed)



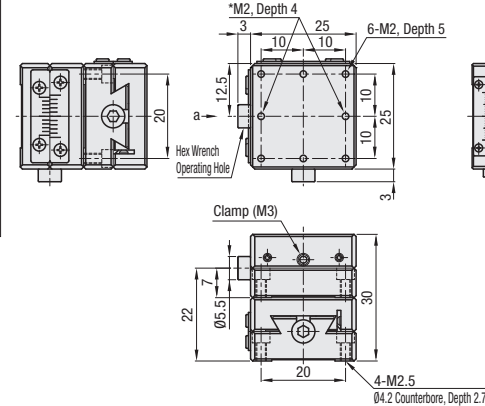
Hex Wrench Hole Details  
(View a)



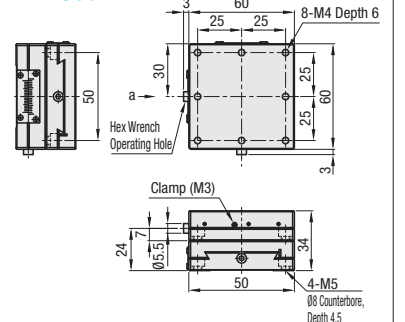
\* The depth will be short due to the stage shape.

Please note that the plate might be removed when the stage is moved in a travel distance more than the predetermined value.

XYFEES40



XYFEES60



M Material: Aluminum Alloy  
S Surface Treatment: Black Anodize

■XY-Axis Stages ●High Precision Stage Existing Product: XYEEG (P.1998)

Part Number		Stage Surface (mm)	Travel Distance (mm)	Travel per Rotation (mm)	Load Capacity (N)	Travel Accuracy Straightness	Weight (kg)	Unit Price
Type	No.	Clamp Position						
XYFEES	25	No Symbol (Standard)	25x25	±5	0.5	50μm	0.06	
	40	R (Right/Left Reversed)	40x40	±7			0.13	
	60		60x60	±8			0.32	

Resolution (Vernier Scale Indication): 0.1mm/division

Ordering Example  
Part Number  
XYFEES40

Example

Tips: Long stroke moves can be made easily with use of a ball-point hex wrench.

