

Integrated Casters & Leveling Mounts

Standard, Conductive, Side Mount



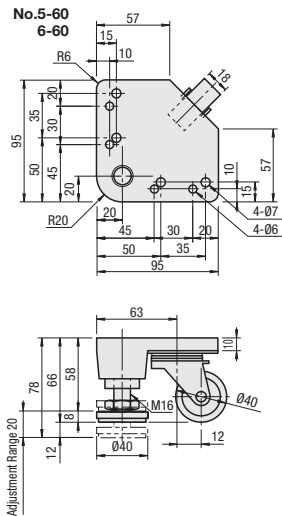
Part Number	
Type	Wheel Material (Color)
HCFT, HCFTK, SHCFT	Nylon (Gray)
HCFTU	Urethane (Green)
HCFTM	MC Nylon (Blue)
HCFTD, SHCFTD	Conductive MC Nylon (Black)

Only HCFT8-500 is phenol (black).

No.	Caster		Jack Bolt	
	Material	Surface Treatment	Material	Surface Treatment
60	ADC12	Black Paint	SS400	Trivalent Chromate
130				
250	SPHC	Trivalent Chromate (Black)		
350				
500	FCD45	Black Paint		

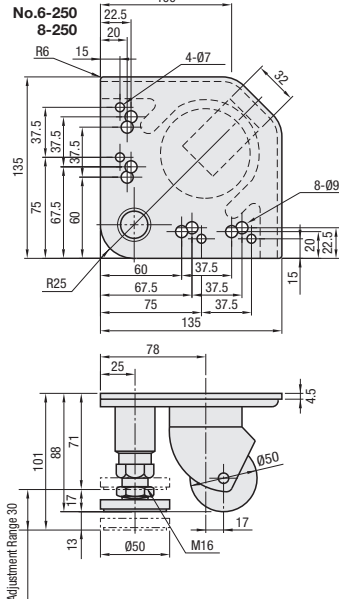
Material of jack bolt and caster is SUS304 for SHCFT or SHCFTD.

Swiveling Caster HCFT



Applicable screws and nuts are common to M5 and M6.

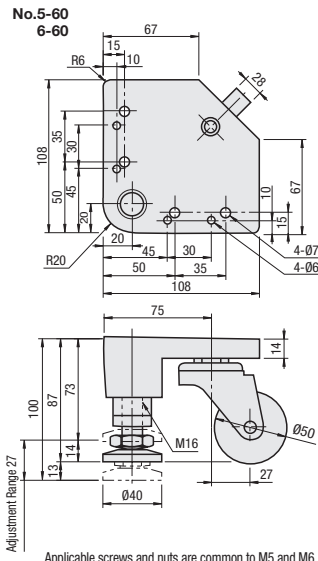
HCFT HCFTM HCFTU HCFTD



Applicable screws and nuts are common to M6 and M8.

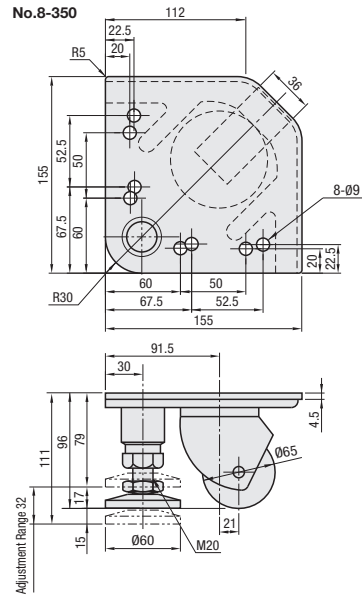
All the casters swivel 360°.

SHCFT

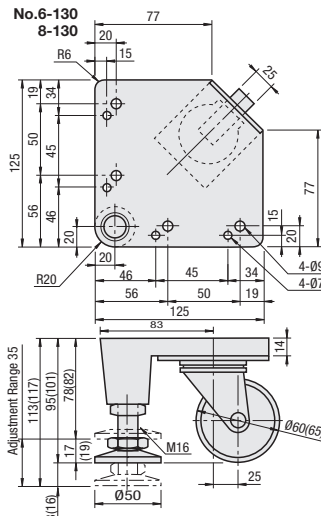


Applicable screws and nuts are common to M5 and M6.

SHCFT SHCFTM SHCFTD



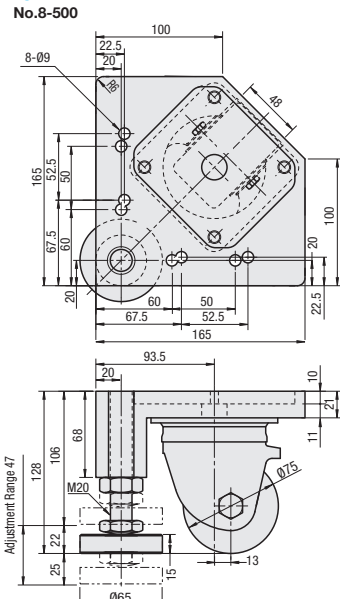
HCFT SHCFT HCFTM SHCFTD HCFTD



The values in ( ) are for Stainless Steel Pad Type.

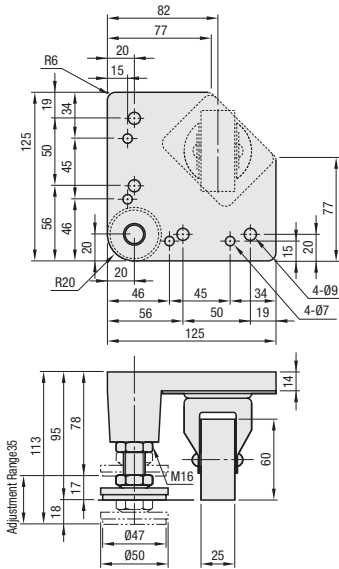
Applicable screws and nuts are common to M6 and M8.

HCFT HCFTM HCFTD



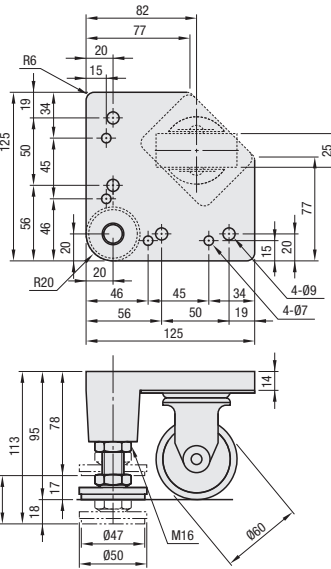
When moving the unit using the casters, raise the leveling mounts completely.

Fixed Caster HCFTK-R No.6-130 8-130



Caster does not swivel.

HCFTK-L No.6-130 8-130



Caster Type	Part Number	Type	No.	Load	Allowable Load/Mass			Screw, Nut		Unit Price 1 ~ 50 pc(s)			
					kg	N	g	Screw	Nut	HCFT	HCFTU	HCFTM	HCFTD
Swivel	HCFT	6	60	60	588	600		CBM5-15 CBM6-15	HNTT5-5 HNTT6-6				
Swivel	HCFT HCFTM HCFTD	8	130	130	1275	1100		CBM6-20 CBM8-25	HNTT6-6 HNTT8-8				
Fixed	HCFTK-L HCFTK-R	6	130	130	1275	1100		CBM6-20 CBM8-25	HNTT6-6 HNTT8-8				
Swivel	HCFT HCFTU HCFTM HCFTD	8	250	250	2452	1445		CBM8-15	HNTT8-8				
Swivel	HCFT HCFTM HCFTD	8	350	350	3432	2170		CBM8-30					

Mounting height of HCFT6-130, HCFT8-130, HCFTK6-130 and HCFTK8-130 is the same, which enables combined use in parallel.

Caster Type	Part Number	Type	No.	Load	Allowable Load/Mass			Screw, Nut		Unit Price 1 ~ 50 pc(s)	
					kg	N	g	Screw	Nut	SHCFT	SHCFTD
Swivel	SHCFT	6	60	60	588	600		SCB5-20 SCB6-20	HNTTSN5-5 HNTTSN6-6		
Swivel	SHCFT SHCFTD	8	130	130	1275	1100		SCB8-25	HNTTSN8-8		

Pad and caster are made of stainless steel (SUS304).

Alterations Part Number - (SET, BL) HCFT6-130 - SET

Alteration	Code	Spec.	Integrated Caster Unit				Component			
			Type	No.	Load	Screw	Quantity	Nut	Quantity	
Applicable Screw and Nut Set	SET	Applicable screws and nuts come in a set.	HCFT	5	60	CBM5-15	4	HNTT5-5	4	
			HCFT	6	60	CBM6-15		HNTT6-6		
			HCFT, HCFTK, HCFTM, HCFTD	6	130	CBM6-20		HNTT6-6		
			HCFT, HCFTU, HCFTM, HCFTD	250	250	CBM6-25		HNTT6-6		
			HCFT, HCFTK, HCFTM, HCFTD	130	130	CBM8-25		HNTT8-8		
			HCFT, HCFTU, HCFTM, HCFTD	8	250	CBM8-15		HNTT8-8		
			HCFT, HCFTM, HCFTD	350	350	CBM8-30				

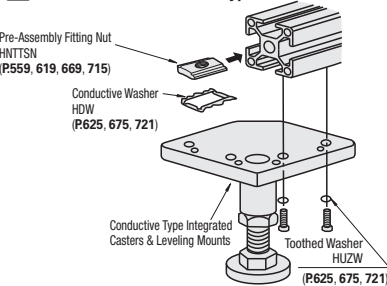
Alteration	Code	Leveling Mount Length					
		BL100			BL150		
Spec.	Changes the length of standard leveling mounts.	Height from Floor		Load	Height from Floor		Load
		Standard	After Change		Standard	After Change	
		60	78	132	60	78	178
		130	113	152	130	113	200
		250	101	145	250	101	191
		350	111	150	350	111	200
					500	150	210

The height from the floor can be increased by using a longer leveling mount. However, the leveling mount sticks out from the plate surface.



Part Number HCFT6-130 HCFTK-L6-130

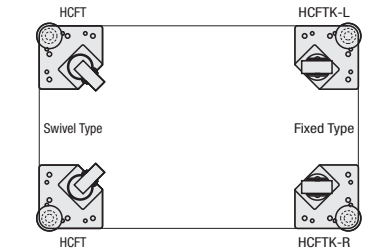
How to Install Conductive Type



Conductive washers and toothed washers are not included with Conductive Type.



Example



Example

