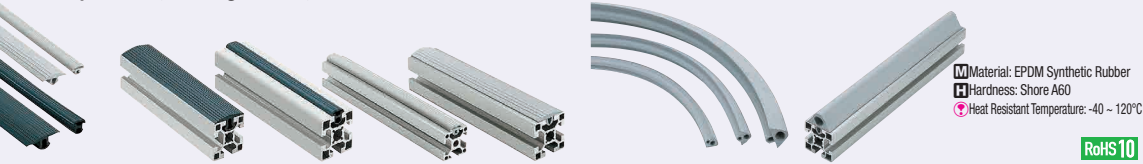


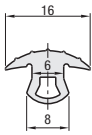
Antislip Covers / Sealing Covers / Protection Covers / Panel Spacers / Magnetic Catch with Adhesive Tape

Antislip Covers, Sealing Covers, Protection Covers

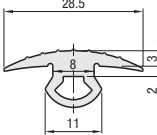


Antislip Covers

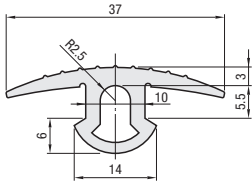
For HFS5 Series
HSCG5
HSCGF5



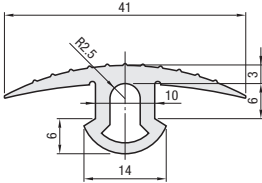
For HFS6 Series
HSCG6
HSCGF6



For HFS8 Series
HSCG8
HSCGF8

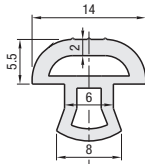


For HFS8-45 Series
HSCG845
HSCGF845

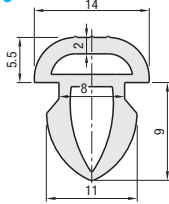


Sealing Covers

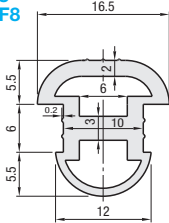
For HFS5 Series
HSCD5
HSCDF5



For HFS6 Series
HSCD6
HSCDF6

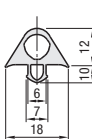


For HFS8, HFS8-45 Series
HSCD8
HSCDF8

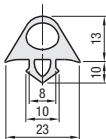


Protection Covers

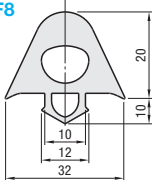
For HFS5 Series
HSCD5
HSCDF5



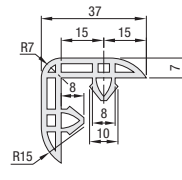
For HFS6 Series
HSCD6
HSCDF6



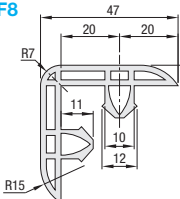
For HFS8, HFS8-45 Series
HSCD8
HSCDF8



For HFS6 (30mm Angle) Series
HSCWF6



For HFS8 (40mm Angle) Series
HSCWF8



Standard Length

Part Number	Type	No.	Color	Length mm	Extrusion (Type)	Unit Price 1 ~ 8 pc(s).	Volume Discount Rate 9 ~ 50
HSCG	5	6	B (Black)	12	HFS5		
	8				HFS6		
					HFS8		
HSCG	845		S (Light Gray)		HFS8-45		
HSCK	5		S (Light Gray)		HFS5		
	6				HFS6		
	8				HFS8, HFS8-45		
HSCD	5		S (Light Gray)		HFS5		
	6				HFS6		
	8				HFS8, HFS8-45		

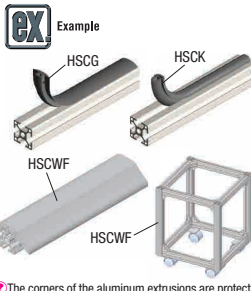
Only light gray color is available for protection covers.
For orders larger than indicated quantity, please check with WOS.

Ordering Example	Part Number	- Color	- Length
	HSCG6	- B	- 12
	HSCGF845	- S	- 1520

Configurable Length

Part Number	Type	No.	Color	Length 1mm Increment	Extrusion (Type)	Unit Price/m 1 ~ 50 pc(s).
HSCGF	5	6	B (Black)		HFS5	
	8				HFS6	
					HFS8	
	845		S (Light Gray)		HFS8-45	
HSCKF	5		S (Light Gray)	50~3000	HFS5	
	6				HFS6	
	8				HFS8, HFS8-45	
HSCDF	5		S (Light Gray)		HFS5	
	6				HFS6	
	8				HFS8, HFS8-45	
HSCWF	6		S (Light Gray)	50~2000	HFS6	
	8				HFS8	

Only light gray color is available for protection covers.

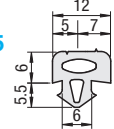


The corners of the aluminum extrusions are protected against damages resulting from collisions likely to occur when moving with casters.

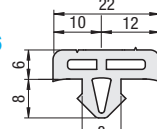
Panel Spacers



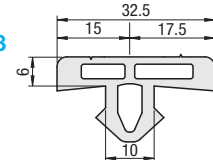
HSCS5
HSCSF5



HSCS6
HSCSF6



HSCS8
HSCSF8



Color: Outgas Testing Results of S Panel Spacer

Measuring Method	GCMS	GCMS	GCMS	GCMS
Outgas	Acetaldehyde	1-Trimethylpentene	Dimethylheptane	Xylene
60°C 60min.	Below Detection Limit	Below Detection Limit	Below Detection Limit	Below Detection Limit
Detection Limit	0.01µg/g	0.01µg/g	0.01µg/g	0.01µg/g

Type	Color	Material	Heat Resistance Temperature
HSCS	Black	EPDM	-40 ~ 120°C
HSCSF	Light Gray Economy		
	Light Gray	Olefin Type Elastomer	-20 ~ 80°C

Standard Length

Part Number	Type	No.	Color	Length mm	Extrusion (Series)	B (Black) Unit Price 1 ~ 8 pc(s).	SE (Light Gray Economy) Unit Price 9 ~ 50	S (Light Gray) Unit Price 1 ~ 8 pc(s).	Volume Discount Rate 9 ~ 50
HSCS	5		B (Black)	12	HFS5				
	6		SE (Light Gray Economy)		HFS6				
	8		S (Light Gray)		HFS8, HFS8-45				

For orders larger than indicated quantity, please request a quotation.

Ordering Example	Part Number	- Color	- Length
	HSCS5	- B	- 12
	HSCSF5	- SE	- 1520

Configurable Length

Part Number	Type	No.	Color	Length 1mm Increment	Extrusion (Series)	B (Black) Unit Price/m 1 ~ 50 pc(s).	SE (Light Gray Economy) Unit Price/m 1 ~ 50 pc(s).	S (Light Gray) Unit Price/m 1 ~ 50 pc(s).
HSCSF	5		B (Black)	100~3000	HFS5			
	6		SE (Light Gray Economy)		HFS6			
	8		S (Light Gray)		HFS8, HFS8-45			



It can be used to fill a gap between the panel and the frame by using the mounting holes for a cover on a bracket.
It can be also used as a stopper for panel doors.

HSCS5
HSCSF5



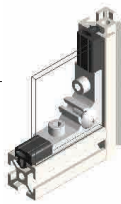
HSCS6
HSCSF6



HSCS8
HSCSF8



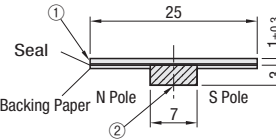
HSCS8
HSCSF8



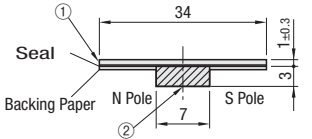
Magnetic Catch with Adhesive Tape



For HFS6 Series
HSMG6



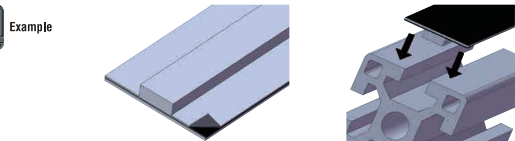
For HFS8, HFS8-45 Series
HSMG8



N Pole is marked. For mounting, refer to the Example.

Part Number	Type	No.	Color	Length mm	Extrusion (Type)	Magnet Type	Attraction Force per 100mm (g)	Surface Magnetic Flux Density Gauss (G)	Unit Price 1 ~ 4 pc(s).	Volume Discount Rate 5 ~ 50
HSMG	6	8	B (Black)	1000	HFS6	Anisotropic Ferrite Magnet (Plastic Magnet)	75	500		

Ordering Example	Part Number	- Color
	HSMG6	- B



1. Peel off the backing paper to expose the adhesive. 2. Attach it to the aluminum extrusion surface.