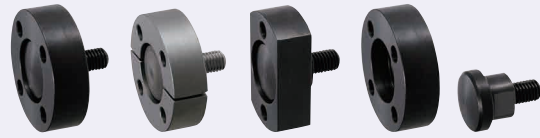


# Floating Joints Flange Mounting

[Threaded] Standard Type

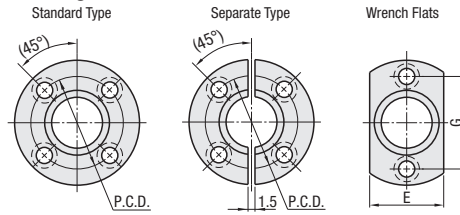
■ Features: Connector can be fixed securely by a flange.



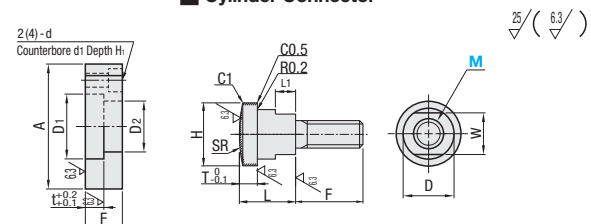
RoHS 10

Set			Type			Material	Hardness		Surface Treatment
Standard	Separate	Wrench Flats	Connector only		Flange only		Flange	Connector	
FJMA	FJMB	FJMC	FJCNF	FJCNR	FJA-H	S45C	45-55HRC	Section, 45-50HRC	Black Oxide
FJMAS	FJMBS	FJMCS	FJCNFS	FJCNRS	FJAS-H	SUS440C Equivalent *		Induction Hardened	-

## Mount Flanges



## Cylinder Connector



⊕ SUS440C Equivalent / SUS420J2 Equivalent Hardened Type may be discolored due to hardening. ⊕ Refer to Allowable Misalignment on the right-hand page.

## Set

Part Number	Type	Mount Flanges										Cylinder Connector										Unit Price						
		M	A	D1	D2	t	F	P.C.D.	d	d1	H1	E	G	MxPitch	F	L	D	H	T	W	L1	SR	FJMA	FJMB	FJMC	FJMAS	FJMBS	FJMCS
Standard	3	42	18	13	5	10	30	4.5	8	5	24	30	3x0.5	5	14	12	17	5	10	6	40							
FJMA	4												4x0.7	6														
FJMAS	5												5x0.8	7														
Separate	6	48	20	15	6	12	34	6	9.5	5.5	28	34	6x1.0	10	16	14	19	6	12	8	50							
FJMB	8	51	24	17	8	16	37	7	11	6	30	37	8x1.25	12	20	16	23	8	14	10	60							
FJMBS	10	54	28	21	8	16	40	7	11	6	32	40	10x1.5	15	20	20	27	8	17	10	60							
Wrench Flats	12	70	36	27	10	20	52	10	14	8	42	52	12x1.75	16	25	25	34	10	22	12	100							
FJMC	16	90	46	35	12	24	68	12	17.5	10	54	68	16x2.0	18	30	32	43	12	27	15	100							
FJMCS	20	106	56	44	15	30	80	14	20	12	66	80	20x2.5	25	55	40	52	15	32	18	200							
	22												22x2.5	28														

## Connector only (See the Set Size Table for detailed sizes.)

Part Number	Type	Mount Flanges			Unit Price		
		M	Fixed	F	FJCNF	FJCNFS	FJCNR
F Fixed	3	5	5-8				
	4	6	5-10				
	5	7	5-12				
	6	10	6-18				
F Configurable	8	12	10-25				
	10	15	10-25				
	12	16	12-36				
	16	18	15-40				
	20	25	20-60				
	22	28	-				

## Flange only (See the Set Size Table for detailed sizes.)

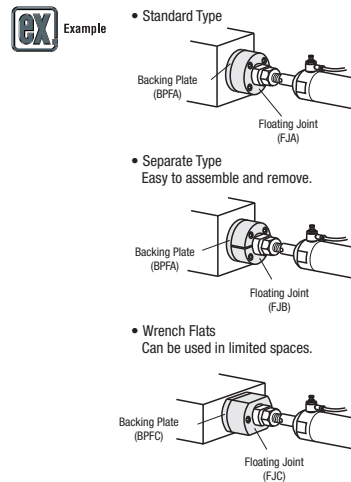
Part Number	Type	Mount Flanges			Unit Price		
		M	FJA-H	FJB-H	FJC-H	FJAS-H	FJBS-H
Standard	3						
	4						
	5						
Separate	6						
	8						
	10						
Wrench Flats	12						
	16						
	20						
	22						

Ordering Example  
 • Connector only F Configurable  
 Part Number - F  
 FJCNR10 - 15

• Other Than Above  
 Part Number  
 FJMA10  
 FJB-H14

Alterations  
 Part Number - F - (AWC)  
 FJMA10 - AWC  
 FJCNRS - 12 - NC

Alteration	Flange Cut	Undercut Processing															
Code	AWC	NC															
Spec.	Cuts four sides of the flange. (Ordering Code) AWC ⊕ Standard Type only (Not applicable to FJMA22)	Machines an undercut at the base of threads. (Ordering Code) NC ⊕ Applicable to FJCNR and FJCNRS only.															
	<table border="1"> <tr> <th>M</th> <th>K</th> </tr> <tr> <td>3, 4</td> <td>32</td> </tr> <tr> <td>5, 6</td> <td>36</td> </tr> <tr> <td>8</td> <td>40</td> </tr> <tr> <td>10</td> <td>42</td> </tr> <tr> <td>12</td> <td>54</td> </tr> <tr> <td>16</td> <td>68</td> </tr> <tr> <td>20, 22</td> <td>80</td> </tr> </table>	M	K	3, 4	32	5, 6	36	8	40	10	42	12	54	16	68	20, 22	80
M	K																
3, 4	32																
5, 6	36																
8	40																
10	42																
12	54																
16	68																
20, 22	80																



# Floating Joints Flange Mounting

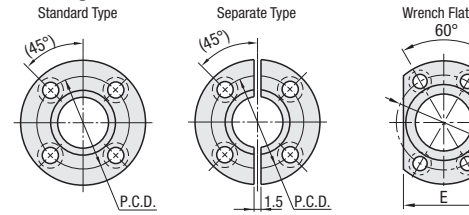
[Threaded] Space Saving Type

■ Features: Compact Type with small diameter of a mounting screw. Floating Connectors for Air Cylinders.

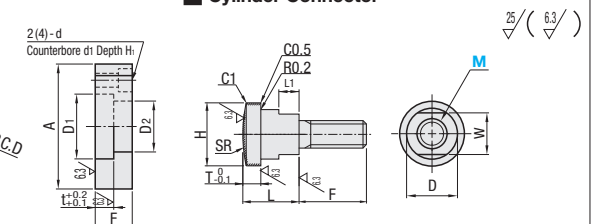


Set			Type			Material	Hardness		Surface Treatment
Standard	Separate	Wrench Flats	Connector only		Flange only		Flange	Connector	
FJUMA	FJUMB	FJUMC	FJUNF	FJUA-H	FJUB-H	S45C	45-55HRC	Section, 45-50HRC	Black Oxide
FJUMAS	-	FJUMCS	FJUNFS	FJUAS-H	FJUBS-H	SUS440C Equivalent *		Induction Hardened	-

## Mount Flanges



## Cylinder Connector



⊕ SUS440C Equivalent / SUS420J2 Equivalent Hardened Type may be discolored due to hardening.

## Set

Part Number	Type	Mount Flanges										Cylinder Connector										Unit Price				
		M	A	D1	D2	t	F	P.C.D.	d	d1	H1	E	MxPitch	F	L	D	H	T	W	L1	SR	FJUMA	FJUMAS	FJUMB	FJUMC	FJUMCS
Standard	5												5x0.8	10	14	12	16	5	10	3	50					
FJUMA	6	34	17	13				24	4.5	8	5	22	6x1.0	13												
FJUMAS	8												8x1.25	15												
Separate	10	40	23	17				30				25	10x1.5	18	15	16	22		13	4	60					
FJUMB	12	52	32	24	5.5	12	40	6	9.5	5.5	34	12x1.75	22	16	22	30	5.5	19		4	100					
FJMBS	16	62	39	31	8	16	48	7	11	6	41	16x2.0	30	20	28	36	8	21								
Wrench Flats	20												20x2.5	32												
FJUMC	22	74	46	36	10	20	58	10	14	8	48	22x2.5	35	25	32	42	10	26	5	200						

## Connector only (See the Set Size Table for detailed sizes.)

Part Number	Type	Mount Flanges			Unit Price		
		M	FJUNF	FJUNFS	FJUMA	FJUMAS	FJUMC
FJUNF	5						
	6						
	8						
	10						
	12						
	16						
	22						

## Flange only (See the Set Size Table for detailed sizes.)

Part Number	Type	Mount Flanges			Unit Price		
		M	FJUA-H	FJUBS-H	FJUB-H	FJUC-H	FJUCS-H
FJUNF	5						
	6						
	8						
	10						
	12						
	16						
Wrench Flats	20						
	22						

## Allowable Misalignment (mm)

M	U
3-10	0.5
12, 14	1
16, 18	1.5
20, 22	2

Ordering Example  
 Part Number  
 FJUMA5  
 FJUBS-H12

Comparison between Standard Shape Type and Space Saving Shape Type (when M=18 Tapped Type)

