

Lead Screw Support Units - Round

Fixed Side Radial Bearing Type

When using Fixed Side Support Units combined with Support Side Support Units

Support Unit Sets combined Fixed Side Support Unit with Support Side Support Unit are available for lower prices.
Add -SET to part number of Fixed Side Support Units to select Support Unit Sets.



Listed Support Side Support Unit Sets are also available by adding -SET to part number of Fixed Side Support Units on P.794.

Support Unit Main Body



RoHS10

Stop Plate Set



RoHS10

Stop Plate Set for Digital Position Indicators Compact Mount



RoHS10

Stop Plate Set for Large Position Indicator Mount



RoHS10

Support Side Support Unit (MRUZ)

Available as Set by adding -SET to a part number of Fixed Side Support Unit



RoHS10

Fixed Side Support Unit		Accessory Dimensions			
Q	Bearing Nut	Collar Dimensions			
	M Fine	Applicable Wrench Size	I.D.	O.D.	Thickness
8	M8x1.0	14	8	11.5	5
10	M10x1.0	17	10	14	5
12	M12x1.0	19	12	15	5
15	M15x1.0	22	15	20	6

Part Number	Type	Support Unit	L	H	F	D	A	A1	C	B	d1	d2	h	R	(L)	(L1)	(L2)	G	E	Bearing Nut	Clamp Lever	Bearing Type	Allowable Axial Load (N)
MRWZ	8	-SET	22	14	28	45	53	35	35	3.4	7	4	17		26			6.5	6	BNR8	CLDFC4-7-M	B608ZZ	1300
MRWZ-S	10	(Only when purchasing support units in set)	24	16	34	52	54	42	42	4.5	8	5	18		29		5	7.5	8	BNR10		B6000ZZ	2300
MRWZ-CP	12				36	54		44	44									8.5	10	BNR12		B6001ZZ	2600
MRWZ-LP	15		27	10	40	63	63	50	52	5.5	10	16	20		34			9.5	12	BNR15		B6002ZZ	2900

Ordering Example	Part Number
TYPE	Q
MRWZ	15
MRWZ	12
MRWZ-S	12
MRWZ-CP	15

Support Side Support Unit Sets are available at 5 percent reduced price compared to Without Support Side Support Units.

Part Number	Support Unit	MRWZ	MRWZ-SET	MRWZ-S	MRWZ-S-SET	MRWZ-CP	MRWZ-CP-SET	MRWZ-LP	MRWZ-LP-SET
Type	Q	Support Side Set	Unit Price	Unit Price	Unit Price	Unit Price	Unit Price	Unit Price	Unit Price
MRWZ	8	-SET							
MRWZ-S	10	(Only when purchasing support units in set)							
MRWZ-CP	12								
MRWZ-LP	15								

Lead Screw Support Units - Round

Support Side



Support Side Support Unit can be purchased as the separate unit. Instead of this, however, purchasing it in combination with Fixed Side Support Unit (P.793) as set is the more economical.



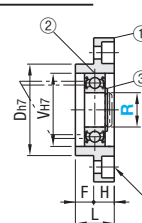
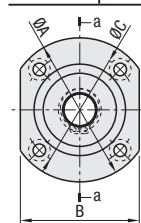
RoHS10

This is the same product as Support Side Set in P.793

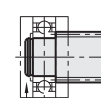
Number	Part Name	Quantity
①	Housing	1
②	Radial Bearing	1
③	Retaining Ring for Shaft (Included)	1

Contrary to image on the photo, Radial Bearing on ②, as well as Retaining Ring for Shaft, is already included with the support unit when the support unit is shipped.

Type	Material	Surface Treatment
MRUZ	S45C	Black Oxide



How to use Retaining Ring for Shaft



Retaining Ring for Shaft (Accessory) should be used for fixing the shaft part. Use Lead Screws for Support Units (P.789) in combination with this ring, or select a product with the retaining shaft groove added on the shaft part.

Part Number		L	H	F	D	A	C	B	V	d1	d2	ℓ	Bearing Type	Retaining Ring for Shaft	MRUZ Unit Price	Volume Discount Rate
Type	R														1 ~ 4 pc(s)	5 ~ 10 pcs.
MRUZ	8	13	7	6	28	45	35	35	22	3.4	6.5	4	B608ZZ	NETW5		
	10	14	7	7	34	52	42	42	26	4.5	8	4.5	B6000ZZ	STWN10		
	12	15	8	7	36	54	44	44	28	4.5	8	4.5	B6001ZZ	STWN12		
	15	17	9	8	40	63	50	52	32	5.5	9.5	5.5	B6002ZZ	STWN15		

Ordering Example	Part Number
MRUZ15	



Stop Plate Set



Stop Plate Set for Digital Position Indicators Compact Mount

The orientation of clamp lever can be toggled to the opposite side by trying to mount the stop plate set in a different manner.



Stop Plate Set for Large Position Indicator Mount

The mounting position of clamp lever can be changed from the right side to the left side and vice versa.



Position Indicators are sold separately. P. 811, 812

Features of Stop Plate Set, Wedge Mechanism

- The screw pulls the wedge up and fastens the shaft to require less torque force to tighten.
- High performance and optimal for the case where frequent adjustment is required. Brass wedges cause less damage to shafts.

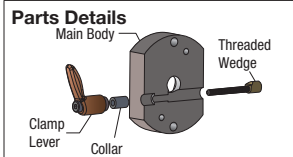
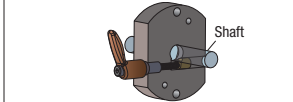


Image of Clamped State



Support Unit Mounting Procedure



- Insert the lead screw shaft into the fixed side support unit.
- After slipping a collar on, thread the included bearing nut on and temporarily tighten at 1/3 of the specified tightening torque. Mount the support side unit on the support end of the shaft and mount.
- While rotating the screw shaft, gradually tighten the bearing nut to obtain smooth motion from end to end.
- When smooth motion is obtained, tighten to full tightening torque to finish.

M	Nut Tightening Torque (N · cm)	Part Number
8	490	BNR8
10	930	BNR10
12	1370	BNR12
15	2350	BNR15

Value is for reference only.