

Lead Screw Support Units Square Type

Fixed Side Radial Bearing Type

When using Fixed Side Support Units combined with Support Side Support Units

Support Unit Sets combined Fixed Side Support Unit with Support Side Support Unit are available for lower prices.
Add -SET to part number of Fixed Side Support Units to select Support Unit Sets.



Listed Support Side Support Unit Sets are also available by adding -SET to part number of Fixed Side Support Units on P.792.

Fixed Side Support Unit



RoHS10

Stop Plate Set



RoHS10

Stop Plate Set for Digital Position Indicators Compact Mount



RoHS10

Stop Plate Set for Large Position Indicator Mount



RoHS10

Support Side Support Unit (MTUZ)

Available as Set by adding -SET to a part number of Fixed Side Support Unit



RoHS10

Q	Fixed Side Support Unit		Accessory Dimensions		
	Bearing Nut	Collar Dimensions	I.D.	O.D.	Thickness
8	M8x1.0	Applicable Wrench Size	8	11.5	3
10	M10x1.0	17	10	14	3
12	M12x1.0	19	12	15	3
15	M15x1.0	22	15	20	3

Part Number		Support Unit Set Support Side Set	A	B	C	F	h	J	H	G	T	L	R	(ℓ)	X	d	E	(ℓ1)	Bearing Nut	Clamp Lever	Bearing	Allowable Axial Load (N)
Type	Q		52	48	25	38	30	35	20	13	60.5	22	22		4.5	6.6	6	24	BNR8	CLDM6-32-M	B608ZZ	1300
MTWZ	8	-SET (Only When Purchasing Support Units In Set)	70	53	36	52	35	34	25	13	65.5	24	23	4.8	4.5		8	27	BNR10	CLDM6-40-M	B6000ZZ	2300
MTWZ-S	10		70	58	36	52	40	39	30	13	24	23			4.5		10	27	BNR12		B6001ZZ	2600
MTWZ-CP	12		80	62	41	60	40	39	30	17	70.5	27	25	5.8	5.5	11	12	31	BNR15		B6002ZZ	2900
MTWZ-LP	15																					



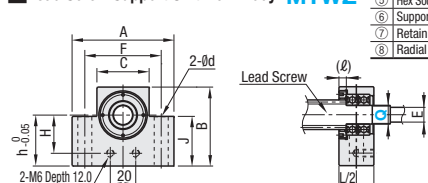
Ordering example	Part Number		
	TYPE	Q	(-SET)
	MTWZ	15	
	MTWZ	12	-SET
	MTWZ-S	12	
	MTWZ-CP	15	-SET

Type		Support Unit Set	Support Unit Fixed Side	Stop Plate Set	Stop Plate Set for Digital Position Indicators Compact Mount	Stop Plate Set for Large Position Indicator Mount
Not included		MTWZ	MTWZ-S	MTWZ-CP	MTWZ-LP	
Included		MTWZ-SET	MTWZ-S-SET	MTWZ-CP-SET	MTWZ-LP-SET	

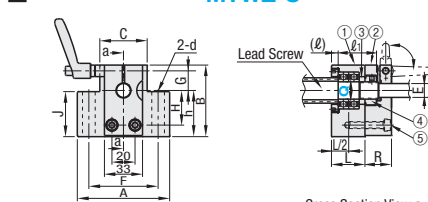
Parts Details

Number	Part Name	MTWZ	-S/-CP/-LP	-SET	Material	Surface Treatment
①	Fixed Side Support Unit	1	1	1	S45C	
②	Collar	1	1	1	SS400	
③	Bearing Nut (w/ Thread Protector)	1	1	1	SS400	
④	Stop Plate Set	-	1	(1)	SS400	Black Oxide
⑤	Hex Socket Head Cap Screw	-	2	(2)	SCM435	
⑥	Support Side Support Unit	-	-	1	S45C	
⑦	Retaining Ring for Shaft	-	-	1	Spring Steel	* No treatment
⑧	Radial Bearing	-	-	1	SUJ2	No treatment

Lead Screw Support Unit Main Body MTWZ

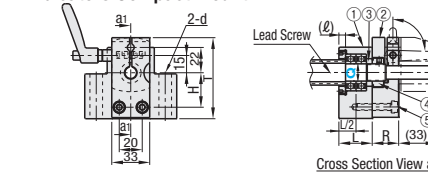


MTWZ-S



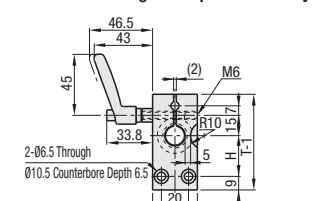
Cross Section View a-a

Stop Plate Set for Digital Position Indicators Compact Mount MTWZ-CP

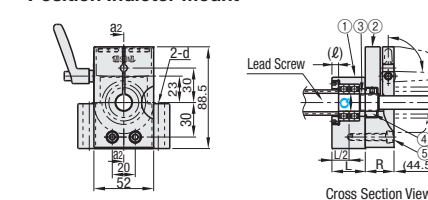


Cross Section View a1-a1

MTWZ-CP Drawing for Stop Plate Set only

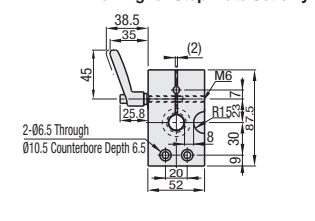


Stop Plate Set for Large Position Indicator Mount MTWZ-LP (Q12, 15)



Cross Section View a2-a2

MTWZ-LP Drawing for Stop Plate Set only



Do not use without inserting the screw shaft (empty tightening). It may deform, causing it to be unusable.

The clamp lever cannot be mounted on the opposite side.

A collar for the clamp lever is not included with Q8. The clamp lever mounting dimensions will be the same as the Large Type.

Lead Screw Support Units Square Type

Support Side



Support Side Support Unit can be purchased as the separate unit. Instead of this, however, purchasing it in combination with Fixed Side Support Unit (P.791) as set is the more economical.



RoHS10

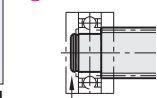
This is the same product as Support Side Set in P.791

Number	Part Name	Quantity
①	Housing	1
②	Radial Bearing	1
③	Retaining Ring for Shaft (Included)	1

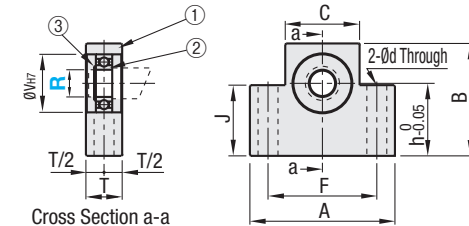
Contrary to image on the photo, Radial Bearing on ②, as well as Retaining Ring for Shaft, is already included with the support unit when the support unit is shipped.

Type	Material	Surface Treatment
MTUZ	S45C	Black Oxide

How to use Retaining Ring for Shaft



Retaining Ring for Shaft (Accessory) should be used for fixing the shaft part. Use Lead Screws for Support Units (P.789) in combination with this ring, or select a product with the retaining shaft groove added on the shaft part.



Part Number		A	B	C	F	h	J	V	T	d	Bearing Type	Retaining Ring for Shaft	Unit Price	Volume Discount Rate
MTUZ	8	52	48	25	38	30	35	22	20	6.6	B608ZZ	NETW5	1 ~ 4 pcs.	5 ~ 10 pcs.
	10	70	53	36	52	35	34	26		9	B6000ZZ	STWN10		
	12	70	58	36	52	40	39	28		9	B6001ZZ	STWN12		
	15	80	62	41	60	40	39	32		11	B6002ZZ	STWN15		

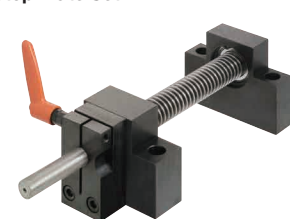


Ordering Example Part Number MTUZ15



Example

Stop Plate Set



Stop Plate Set for Digital Position Indicators Compact Mount



Stop Plate Set for Large Position Indicator Mount



Position Indicators are separately sold. P. 811, 812

Easy Assembly Design Dimensions Table

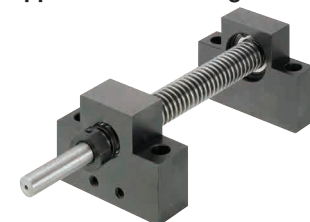
Lead Screw			Lead Screw Support Units				Position Indicator Compact / Large		
Type	Shaft Dia.	Pitch	Fixed Side		Support Side		Type	Spindle Pitch	Alterations
			Type	Bearing I.D.	Type	Bearing I.D.			
MTW (L) K MTWB (L) K RMTW (L) K MTSW (L) K	12	2	MTWZ MTWZ-S MTWZ-CP MTWZ-LP	8	MTUZ	8	D□□□□-	2	-CSE6
	14	3		10		10		3	-CSE8
	16	3		12		12		4	-CSE10
	18	4		15		15		4	-CSE12
	20	4						4	-CSE12
	22	5						5	-CSE12

By adding to (L) to a part number, the Reverse Screw Type is delivered. For position indicators, this Screw Type should be specified.

Precaution for Use: Use the position indicators within maximum rotational speed. P. 811, 812

*For Digital Position Indicators Large, Spindle Pitch 2 cannot be selected.

Support Unit Mounting Procedure



- Insert the lead screw shaft into the fixed side support unit.
- After slipping a collar on, thread the included bearing nut on and temporarily tighten at 1/3 of the specified tightening torque. Mount the support side unit on the support end of the shaft and mount.
- While rotating the screw shaft, gradually tighten the bearing nut to obtain smooth motion from end to end.
- When smooth motion is obtained, tighten to full tightening torque to finish.

M	Nut Tightening Torque (N · cm)	Part Number
8	490	BNR8
10	930	BNR10
12	1370	BNR12
15	2350	BNR15

Value is for reference only.