

Note that, for some of the types shown here, order might be unable to be received by the MISUMI Indonesia offices.

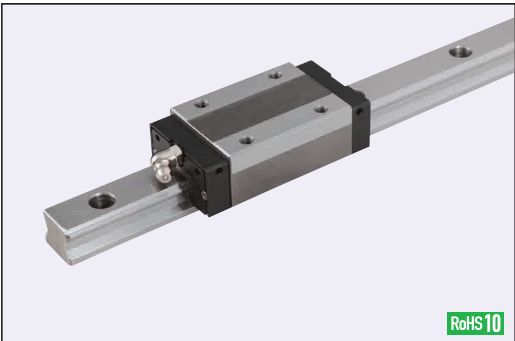


Linear Guides for Super Heavy Load

Normal Clearance

Similar Product Page **P581**

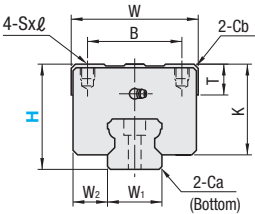
Similar Products Comparison Points | Select C-VALUE Products for medium-accuracy positioning, medium/low load, and medium-to-low frequency drive applications. When you consider using C-VALUE Products, select an appropriate model after comparing the specifications with those of the existing products. **P581**



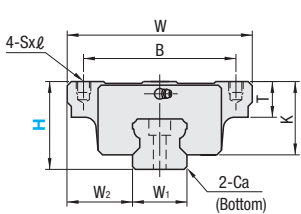
	Type		L Dimension	Material Hardness
	1 block	2 blocks		
Standard Block	C-SHR	C-SH2R	Selectable	Rails / Blocks: Carbon Steel 58~62HRC
	C-SHRL	C-SH2RL	Configurable	
	C-SHWT	C-SH2WT	Selectable	
	C-SHWTL	C-SH2WTL	Configurable	

Heat Resistant Temperature: -20 ~ 80°C

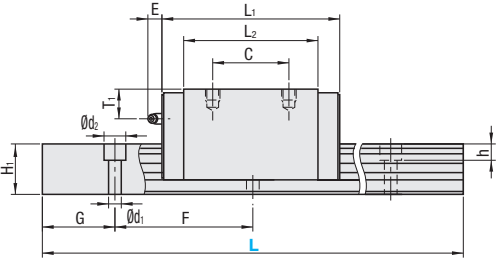
The mounting dimensions are same for the existing and C-VALUE Products.



Standard



Wide Block



For L Configurable, G dimensions differ from those shown in the table below. For details, see **P 531**.

- Precautions for Use**
- This product is All Ball Type. Blocks are equipped with retainers to prevent balls from derailing. For how to handle the blocks, see **P 525**.
 - Radial clearances and accuracies are not guaranteed if the blocks and rails are interchanged from the original set combinations.
 - Thick grooves are provided on the datum planes of blocks and rails. Be sure to match the datum planes when using.
 - Rails cannot be connected end to end.
 - The accuracy of Linear Guides is guaranteed after mounting the rail (after fastening screws on the rail and pushing it onto the datum plane).
 - Minor bending of the rail will be adjusted after being mounted and will not affect the performance.

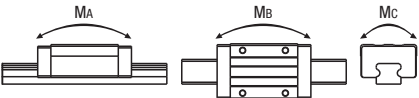
- Others**
- Filled with Lithium soap based grease (Alvania Grease S2 by Showa Shell Sekiyu K.K.).
 - Grease Fittings: Straight Type for H24 and H28 and Angled Type for H30, H36, H40, H42 and H45.
 - Grease Fitting is screw-in type, and thus, can be repositioned.
 - For installation and maintenance of Linear Guides, see **P 529**.

Part Number		H	L	Block Dimension												Guide Rail Dimension									
				TYPE		W	L ₁	B	C	Sxℓ	L ₂	K	T	Cb	Grease Fitting			H ₁	W ₁	W ₂	Ca	Counterbored Hole		F	G
															1 block	2 blocks	Mounting Hole					E	T ₁		
Standard	C-SHR C-SHRL	C-SH2R C-SH2RL	28	220~1960	34	55.9	26	26	M4x5	39.5	24.8	10.2	0.5	M4x0.7	7	9.5	13	15	9.5	0.5	4.5x7.5x6	60	20		
			30	220~1960	44	74	32	36	M5x5	54	25.4	8.2	0.5	M6x1	14	6.5	16.5	20	12	0.5	6x9.5x8.5	60	20		
			40	220~1960	48	80	35	35	M6x6.5	59	34.2	12.15	1.0	M6x1	14	11.5	20	23	12.5	0.9	7x11x9	60	20		
			45	280~1960	60	95.3	40	40	M8x10	69.3	38	11	1.0	M6x1	14	11	23	28	16	1.0	9x14x12	80	20		
Wide Block	C-SHWT C-SHWTL	C-SH2WT C-SH2WTL	24	220~1960	47	55.9	38	30	M5x8	39.5	20.8	8	–	M4x0.7	7	5.5	13	15	16	0.5	4.5x7.5x6	60	20		
			30	220~1960	63	74	53	40	M6x10	54	25.4	10	–	M6x1	14	6.5	16.5	20	21.5	0.5	6x9.5x8.5	60	20		
			36	220~1960	70	80	57	45	M8x12	59	30.2	12	–	M6x1	14	7.5	20	23	23.5	0.9	7x11x9	60	20		
			42	280~1960	90	95.3	72	52	M10x15	69.3	35	15	–	M6x1	14	8	23	28	31	1.0	9x14x12	80	20		

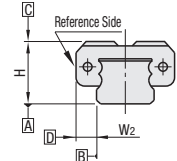
Allowable Load

kgf=N×0.10972

H	Basic Load Rating		Allowable Static Moment			Mass		
	C (Dynamic) kN	C0 kN	MA N·m	Mb N·m	Mc N·m	Block kg		Guide Rail kg/m
						Standard	Wide	
24 28	5.1	10.2	54.2	54.2	79.9	0.20	0.20	1.32
30	8.6	16.8	117.3	117.3	178.6	0.29	0.40	2.28
36 40	11.0	20.8	158.3	158.3	254.0	0.55	0.62	3.17
42 45	16.0	29.4	263.4	263.4	432.5	0.85	1.42	4.54



Preload and Accuracy Standards



Interchangeable, Light Preload Type

Radial Clearance (μm)	
H24 H28	-4~+4
H30	-5~+5
H36 H40	-6~+6
H42 H45	-7~+7
Dimensional Accuracy (μm)	
Height H Tolerance	±120
Variation of Height H	40
Width W2 Tolerance	±120
Variation of Width W2	40
Running Parallelism of Plane C against Plane A	See
Running Parallelism of Plane D against Plane B	P 525

H	Selectable L	Unit Price			
		1 block		2 blocks	
		C-SHR	C-SHWT	C-SH2R	C-SH2WT
24 (SHWT) 28 (SHR)	220				
	280				
	340				
	400				
	460				
	520				
	580				
	640				
	700				
	760				
	820				
	880				
	940				
	1000				
	1060				
	1120				
30	1180				
	1240				
	1300				
	1360				
	1420				
	1480				
	1540				
	1600				
	1660				
	1720				
	1780				
	1840				
	1900				
	1960				
36 (SHWT) 40 (SHR)	220				
	280				
	340				
	400				
	460				
	520				
	580				
	640				
	700				
	760				
	820				
	880				
	940				
	1000				
	1060				
	1120				
42 (SHWT) 45 (SHR)	1180				
	1240				
	1320				
	1400				
	1480				
	1560				
	1640				
	1720				
	1800				
	1880				
	1960				

Ordering Example Part Number - L
C-SHR28 - 880
C-SHWT24 - 880

Alterations Part Number - L - (B3)
C-SHR30 - 820 - B3

Alterations	Code	Spec.
3-Block Specifications	B3	Add 2 blocks to 1-block product to ship as 3-block separate item. Selection Example: C-SHR30-400-B3
4-Block Specifications	B4	Add 3 blocks to 1-block product to ship as 4-block separate item. Selection Example: C-SHR30-400-B4

L Dimension Configurable Type (10mm Increment)

H	Unit Price			
	1 block C-SHRL	2 blocks C-SHWTL	3 blocks C-SH2RL	4 blocks C-SH2WTL
24	-	-	-	-
28	-	-	-	-
30	-	-	-	-
36	-	-	-	-
40	-	-	-	-
42	-	-	-	-
45	-	-	-	-

For calculation of L Dimension Configurable Type (10mm Increment), add the above amount to the unit price of the Selectable Type longer than, and closest to this L Dimension Configurable Type.

Position of Grease Fitting (Reference plane on the front side)		Selectable Shortest Rail Length for B3/B4		
1 block	2 blocks	3 blocks	4 blocks	
24, 28	30	400	520	
36, 40	42, 45	440	520	

Additional Block Price

H	Unit Price			
	B3 C-SHR	B3 C-SHWT	B4 C-SHR	B4 C-SHWT
24	-	-	-	-
28	-	-	-	-
30	-	-	-	-
36	-	-	-	-
40	-	-	-	-
42	-	-	-	-
45	-	-	-	-