

Single Axis Actuators LX26 Standard / Cover Type



For Single Axis Actuator LX Series selections, please use our 2D and 3D CAD data and Technical Calculation Software (free of charge).  
http://download.misumi.jp/mo/fa\_sottf.html

Convenient Sensor Sets are also available. P424

Design / Utility Model Registered

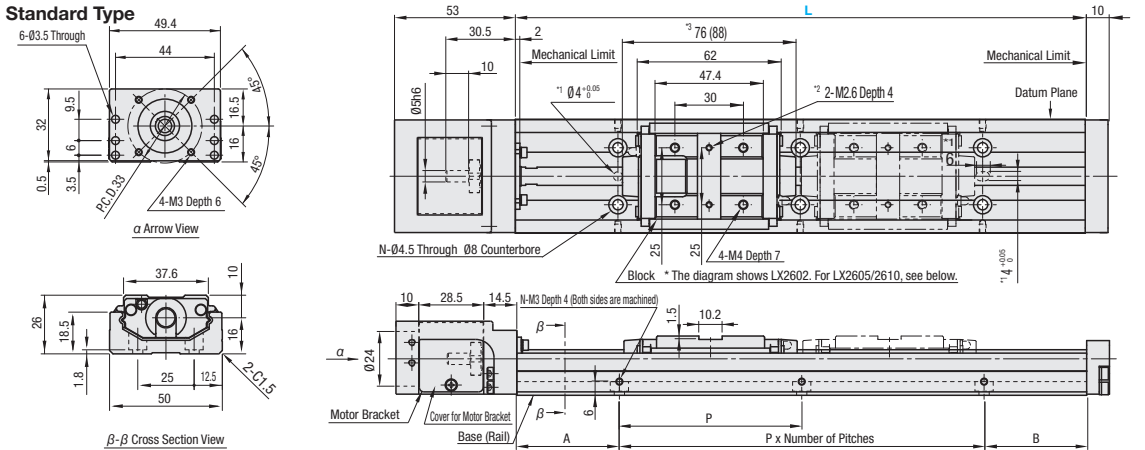
<Standard Type>      <Cover Type>      <Standard, No Motor Bracket Type>

**Specifications**  
**LX26**  
Standard / Cover  
Screw Shaft Dia. (mm) 8  
Lead (mm) 2, 5, 10  
Accuracy High Grade / Precision Grade

**Accessory**  
① Motor Adapter Plate  
M A5052 S Black Anodize  
② Adapter Plate Screw 4 pcs. M SUSXM7  
③ No accessory is included with No Motor Bracket Type.  
④ For Material table, see P411

Part Number	Standard Grease		Low Dust Generation Grease		Lubrication Unit MX-equipped (Standard Grease)	
	High Grade	Precision Grade	High Grade	Precision Grade	High Grade	Precision Grade
Lead 2	LX2602 (C)	LX2602 (C) P	LX2602 (C) G	LX2602 (C) PG	LX2602 (C) -MX	LX2602 (C) P-MX
Lead 5	LX2605 (C)	LX2605 (C) P	LX2605 (C) G	LX2605 (C) PG	LX2605 (C) -MX	LX2605 (C) P-MX
Lead 10	LX2610 (C)	LX2610 (C) P	LX2610 (C) G	LX2610 (C) PG	LX2610 (C) -MX	LX2610 (C) P-MX

(C) is for Cover Type.      Low Dust Generation Grease Information P414      Lubrication Unit MX Information P408



Part Number		Block Qty.	Motor Adapter Plates	Base Length (L)	* Effective Stroke			Total Mass (kg)				Mounting Hole Dimensions					
High Grade	* Precision Grade				B1	B2	MX-equipped (B1)	Standard		Cover		A	P	B	Number of Pitches	Number of Holes (N)	
								B1	B2	B1	B2						
(Standard Grease) LX2602 (C) LX2605 (C) LX2610 (C)	(Standard Grease) LX2602 (C) P LX2605 (C) P LX2610 (C) P	(1 pc.) B1  *Lubrication Units MX-equipped types and Lead 10 are available in B1 only	(Servo Motor) A2625 A2628 A2638 A2640 E2640	100 (Lead 2 only)	17	-	-	0.87	-	1.07	-	10	-	10	1	4	
(Low Dust Generation Grease) LX2602 (C) G LX2605 (C) G LX2610 (C) G	(Low Dust Generation Grease) LX2602 (C) PG LX2605 (C) PG LX2610 (C) PG			150	67	-	-	0.95	-	1.15	-	35	-	35	-	-	-
				200	117	-	105	1.16	-	1.36	-	20	-	20	2	6	
				250	167	91	155	1.37	1.57	1.57	1.89	45	80	45	-	-	
(Lubrication Unit MX-equipped, Standard Grease) LX2602 (C) -MX LX2605 (C) -MX LX2610 (C) -MX	(Lubrication Unit MX-equipped, Standard Grease) LX2602 (C) P-MX LX2605 (C) P-MX LX2610 (C) P-MX	(2 pcs.) B2  * (No Adapter Plate) N  * (No Motor Bracket) F	(Stepping Motor) T2628 T2642 T2656.4	300	217	141	205	1.58	1.78	1.78	2.10	30	-	30	3	8	
				350 (Lead 5 and 10 only)	267	191	255	1.79	1.99	1.99	2.31	15	-	15	4	10	
				400 (Lead 5 and 10 only)	317	241	305	2.00	2.20	2.20	2.52	40	-	40	-	-	

\* Precision Certificate is enclosed with precision grade products.  
\* Motor adapter plate and mounting screws are not included with No Adapter Plate Type.  
\* Effective stroke is indicated in dimensions with a margin of 2.5mm each from the ends.  
\* (C) is for Cover Type.  
④ For Max. Velocity, see P413  
④ For Moment of Inertia, see P412  
④ 0.007kg will be added to MX-equipped types.

**Accuracy Standards**

Accuracy Standards	High Grade	Precision Grade
Positioning (mm)	0.06	0.02
Backlash (mm)	0.01	0.003
Positioning Repeatability (mm)	±0.005	±0.003
Running Parallelism (mm)	0.025	0.01
Starting Torque (N·cm)	2	2

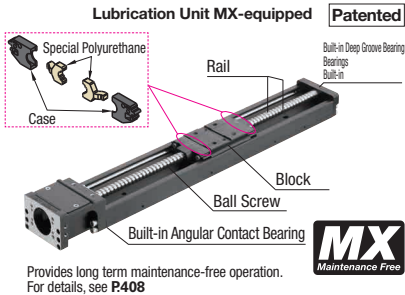
**Servo Motor Application Table**

Part Number	Flange Size	Manufacturer	Wattage
A2625	25	Yasukawa / Mitsubishi Electric Corporation	10W/20W/30W
A2628	28	Mitsubishi Electric Corporation	10W/20W/30W
A2638	38	Panasonic	50W/100W
E2640	40	SIEMENS	50W
A2640	40	Yasukawa Electric Corporation Mitsubishi Electric Corporation Keyence Corporation Omron Corporation Sanyo Denki Co., Ltd.	30W/50W

④ Shaft insertion depth on coupling will be 0.5mm shorter on each side when used with Siemens motor.  
④ For details on supported motor types and detailed diagram of Motor Adapter Plates, see P423

**Ordering Example**

Part Number	-	Block Qty.	-	Motor Adapter Plates	-	Base Length (L)
LX2602C	-	B1	-	A2640	-	300
LX2605-MX	-	B1	-	A2638	-	200



Unit price for Precision Grade / Low Particle Generation Grease Option / Lubrication Unit MX-equipped

Specifications	Unit Price
Precision Grade	
Low Dust Generation Grease	
Lubrication Unit MX-equipped	

④ Listed Price + Unit Price = Product Price  
④ Volume Discount Rate is applicable.

High Grade Unit Price											
Part Number	L=100 (Lead 2 only)	L=150	L=200	L=250	L=300	L=350 (Lead 5 and 10 only)	L=400 (Lead 5 and 10 only)	Motor Adapter Plates	Block Qty.	Screw Shaft Dia.	Lead
LX26□□-B1-□								Servo Stepping No Adapter Plate	1	8	2
LX26□□-B2-□	-	-	-						2		5
LX26□□-B1-F								No Bracket	1	8	10
LX26□□-B2-F	-	-	-						2		5
LX26□□-C-B1-□								Servo Stepping No Adapter Plate	1	8	2
LX26□□-C-B2-□	-	-	-						2		5
LX26□□-C-B1-F								No Bracket	1	8	10
LX26□□-C-B2-F	-	-	-						2		5

④ Lead 10 is available for selection only in case of B1 (Block 1 pc.)  
④ LX26□□(C) Series sensor set can be specified as an alteration. For Detailed alteration diagram, see P424