

Components for Inspection

Components for Inspection and Locating Kits, Construction Balls, Pads, Covers

■Features: For locating removable jig parts. (See app. example below)



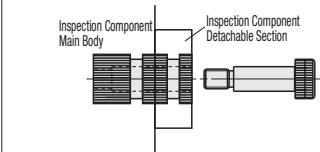
RoHS10

Config.		Type	Material, Hardness, Surface Treatment			
Knurling of Collar / Bushing	Stripper Bolt Shape		Collar / Bushing	Stripper Bolt	Wing Screw Type only	
Provided	Hex Socket Head With Wing Screw	KJLP	SS400	SCM435 33~38HRC	SS400 Trivalent Chromate	Spring Steel 45~50HRC
Not Provided	Hex Socket Head With Wing Screw	KJLPC				
	Hex Socket Head With Wing Screw	KJLPNC				

* If only shoulder bolts for wrench are required, order GMSB (P. 2-216).



Example



• Bushing

*Tolerance is applicable only with no knurling.

• Collar

*Tolerance is applicable only with no knurling.

• Stripper Bolt (Hex Socket Head)

• Spring Pin

(With Wing Screw)

• Stripper Bolt (Hex Socket Head)

• Spring Pin

(With Wing Screw)

• Stripper Bolt (Hex Socket Head)

• Spring Pin

(With Wing Screw)

• Stripper Bolt (Hex Socket Head)

• Spring Pin

(With Wing Screw)

• Stripper Bolt (Hex Socket Head)

• Spring Pin

(With Wing Screw)

• Stripper Bolt (Hex Socket Head)

• Spring Pin

(With Wing Screw)

• Stripper Bolt (Hex Socket Head)

• Spring Pin

(With Wing Screw)

• Stripper Bolt (Hex Socket Head)

• Spring Pin

(With Wing Screw)

• Stripper Bolt (Hex Socket Head)

• Spring Pin

(With Wing Screw)

• Stripper Bolt (Hex Socket Head)

• Spring Pin

(With Wing Screw)

• Stripper Bolt (Hex Socket Head)

• Spring Pin

(With Wing Screw)

• Stripper Bolt (Hex Socket Head)

• Spring Pin

(With Wing Screw)

Part Number		D	L	I.D. / Screw				Stripper Bolt				Wing Screw				Unit Price			
Type				P	M	f	F	Length	Head	A	B	h	d						
KJLP KJLPN	KJLPC KJLPNC	12	15	6	M4	6	7	30	4	9	3	15	21						
			25	6	M4	6	7	40	4	9	3	15	21						
		20	15	10	M8	8	12	25	8	16	6	24	31						
			30	10	M8	8	12	40	8	16	6	24	31						

Ordering Example: Part Number - L, KJLP20 - 15

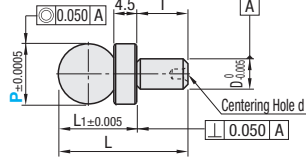
Alterations: Part Number - L - (HT, STC), KJLP20 - 15 - HT

Alterations	Code	Spec.
Flats Machining	HT	Chamfers a side of collar and bushing.
Additional Surface Treatment (Black Oxide)	STC	Adds black oxide surface treatment. Applicable to collar and bushing only.

Construction Balls

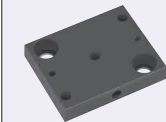


CRB

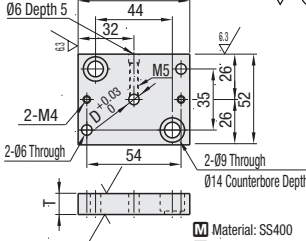


Material: SUS440C
Hardness: HRC56

Pads for Construction Balls



CRBP

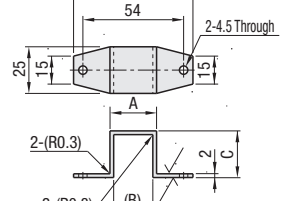


Material: SS400
Surface Treatment: Black Oxide

Covers for Construction Balls



CRBC



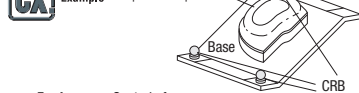
Material: SPCC
Surface Treatment: Black Oxide

Part Number	Type	P	T	D	L	L ₁	d	Unit Price
CRB	12	10	6	25.73	15.723	2.03		
	20	20	10	43	23	3		

Product CRB12 is shipped if P dimension isn't specified.



Example



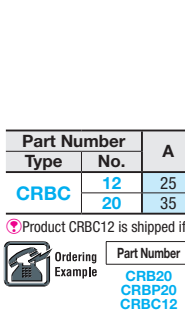
For Accuracy Control of Inspection Components.

Part Number	Type	No.	T	D	Applicable Ball	Unit Price
CRBP	12	12	6	CRB12		
	20	22	10	CRB20		

Product CRBP12 is shipped if the number isn't specified.



Example



Part Number	Type	No.	A	(B)	C	Applicable Ball	Unit Price
CRBC	12	25	21	25	CRB12		
	20	35	31	30	CRB20		

Product CRBC12 is shipped if the number isn't specified.



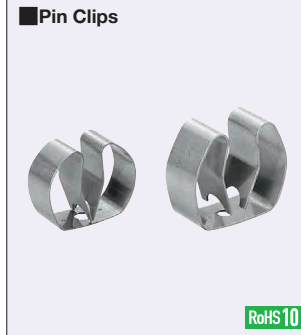
Example



Components for Inspection

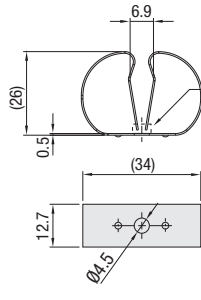
Pin Clips, Wires for Pins, Chains for Pins

■Features: For storing slot pins when not in use.

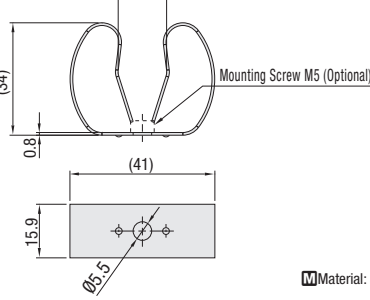


RoHS10

CLIP8



CLIP16



Material: SUS301

Part Number	Type	No.	Applicable Slot Pin Handle Dia.	Unit Price	Volume Discount Rate
CLIP	8		Ø8, 10, 12	1 ~ 9 pc(s).	10 ~ 29 pcs. 30 ~ 49 pcs. 50 ~ 100 pcs.
	16		Ø16, 20, 25		



Ordering Example

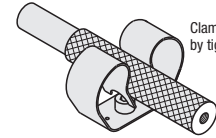
Part Number: CLIP8

For orders larger than indicated quantity, please request a quotation.



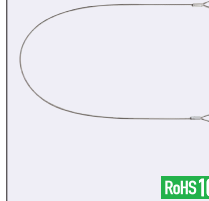
Example

For storing slot pins when not in use.



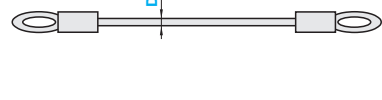
Clamping force may be adjusted slightly by tightening the mounting screw.

Wires for Slot Pins



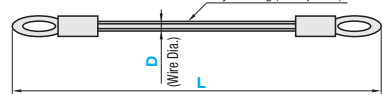
RoHS10

KJW



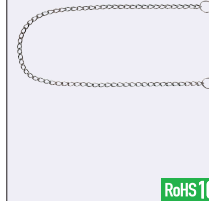
Material: SUS304

KJWB



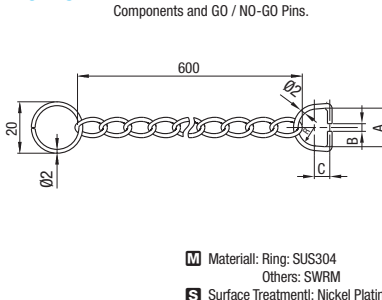
Vinyl Coating (Transparent)
Material: SUS304

Chains for Slot Pins



RoHS10

KJWCH



*Chains for Alteration CH on Slot Pins for Inspection Components and G0 / NO-G0 Pins.

Material: Ring: SUS304

Others: SWRM

Surface Treatment: Nickel Plating

Part Number	Type	D	L 50mm Increment	Applicable Screw	Unit Price
KJW KJWB	1		300~700	M5	
	2				

* D=2 product is shipped if D dimension isn't specified.

* The thickness of KJWB is D (wire dia.) + approx. 0.5mm of vinyl coating thickness.

Part Number	Type	No.	A	B	C	R	Applicable Slot Pin Handle Dia.	Unit Price
KJWCH	1	14	2	5	7		8, 10	
	2	17	4	6	8.5		12	
	3	21	6	7	10.5		16	
	4	25	8	8	12.5		20	
	5	30	10	9	15		25	
	6	36	12	10	18		30	



Example

Part Number: KJW2, KJWCH3 - L, 350