

Locating Pins - Small Flat Head

Tapped

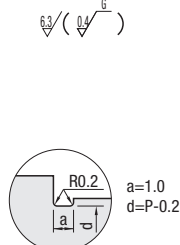
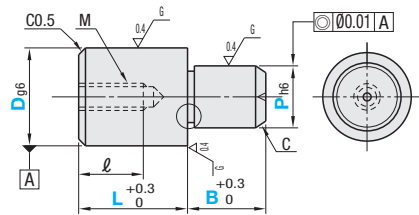
■ **Features:** Small Flat Head with the shape designed to be mounted from back using bolts. Improved maintainability compared to the press fit type.



(Alteration CN)
RoHS 10

Material No.	Material	Surface Treatment	Hardness	Type		
				P Selectable	P Configurable	P, L, B Configurable
①	SKS3 Equivalent	-	Treated Hardness: 60 ~ 63HRC	JPDSTB	JPDSTC	FPDSTC
②	SKS3 Equivalent	Hard Chrome Plating Plating Thickness: 3µm or more	Treated Hardness: 50 ~ 55HRC Plating Hardness: 750HV ~	-	-	GFPDSTC
④	SUS304*	-	-	SJPDSTB	-	SFPDSTC
⑥	SUS440C Equivalent	-	Treated Hardness: 50 ~ 55HRC	-	CJPDSTC	CFPDSTC

* For P Selectable Type, it is SUS304 equivalent.



Ⓜ SUS440C Equivalent has an identification groove at any position on D part.

Ⓜ Relief dimension is a reference value.

■ P Dim. Tolerance Table

P	h6
4.00-6.00	0 -0.008
6.01-10.00	0 -0.009
10.01-18.00	0 -0.011
18.01-20.00	0 -0.013

■ P Selectable

Type	Part Number		P Selection	L	B	M (Coarse)	* Tightening Torque N·cm	ℓ	C
	D	D dim. Tolerance g6							
JPDSTB SJPDSTB	6	-0.004 -0.012	4	10	3	M3	147	5	0.5
	8	-0.005 -0.014	6	12	4	M4	333	6	1
	10	-0.005 -0.014	8	16	5	M5	676	8	1.5
	12	-0.006 -0.017	10	20	6				
	16	-0.006 -0.017	10 14	24	10	M8	2803	12	3

■ P Configurable

Type	Part Number		P 0.01mm Increment	L	B	M (Coarse)	* Tightening Torque N·cm	ℓ	C
	D	D dim. Tolerance g6							
JPDSTC CJPDSTC	6	-0.004 -0.012	4.00~6.00	10	3	M3	147	5	0.5
	6T	-0.004 -0.012				M2.6	-	4	
	8	-0.005 -0.014	6.00~8.00	12	4	M4	333	6	1
	10	-0.005 -0.014	7.00~10.00	16	5	M5	676	8	1.5
	12	-0.005 -0.014	7.00~12.00	20	6				
	13	-0.006 -0.017	8.00~13.00	22	10	M8	2803	12	2
	16	-0.006 -0.017	10.00~16.00	24	10				
	20	-0.007 -0.020	13.00~20.00	32	20				3

■ P, L, B Configurable

Type	Part Number		P 0.01mm Increment	L 1mm Increment	B 0.1mm Increment	M (Coarse)	* Tightening Torque N·cm	ℓ	C
	D	D dim. Tolerance g6							
FPDSTC GFPDSTC SFPDSTC CFPDSTC	6	-0.004 -0.012	4.00~6.00	8~12	2.0~12.0	M3	147	5	0.5
	6T	-0.004 -0.012				M2.6	-	4	
	8	-0.005 -0.014	6.00~8.00	11~16	2.0~15.0	M4	333	6	1
	10	-0.005 -0.014	7.00~10.00	11~20	3.0~20.0	M5	676	8	1
	10T	-0.005 -0.014		8~16	3.0~20.0	M4	333	6	
	12	-0.006 -0.017	7.00~12.00	12~24	3.0~20.0	M5	676	8	1.5
	12T	-0.006 -0.017		8~18	3.0~20.0	M4	333	6	
	13	-0.006 -0.017	8.00~13.00	13~26	5.0~20.0	M8	2803	10	2
	13T	-0.006 -0.017		10~20	5.0~20.0	M6	1156	9	
	16	-0.007 -0.020	10.00~16.00	16~32	5.0~20.0	M8	2803	12	3
	16T	-0.007 -0.020		10~24	5.0~20.0	M6	1156	9	
	20	-0.007 -0.020	13.00~20.00	20~40	5.0~20.0	M8	2803	12	
20T	-0.007 -0.020		12~30	5.0~20.0	M6	1156	9		

Ⓜ Pins of D dimension with T have one size smaller thread diameter and larger wall thickness. (Actual D dimension is the number without "T".)

Ⓜ Note the strength of under-head part. Ⓜ P.1566 Ⓜ Please confirm pilot hole depth on Ⓜ P.1566. Holes may go through.

* Tightening torque (reference) will be within Strength Class of Tightening Torque on Technical Data Ⓜ P.2297 (10.9). Not applicable when using locking materials or lock washers.



Ordering Example

Part Number - P - L - B
 JPDSTC6 - 4.00
 FPDSTC6 - P4.00 - L10 - B5.5

■ P Selectable

D	Unit Price	
	①SKS3 Hardened JPDSTB	④SUS304 SJPDSTB
6		
8		
10		
12		
16		

■ P Configurable

D	Unit Price	
	①SKS3 Hardened JPDSTC	⑥SUS440C CJPDSTC
6		
6T		
8		
10		
12		
13		
16		
20		

■ P, L, B Configurable

D	Unit Price			
	①SKS3 Hardened FPDSTC	②Hard SKS3 GFPDSTC	④SUS304 SFPDSTC	⑥SUS440C CFPDSTC
6				
6T				
8				
10				
10T				
12				
12T				
13				
13T				
16				
16T				
20				
20T				



Alterations

Part Number - P - L - B - (RC, CN, RAC, LAC)
 FPDSTC6 - P4.00 - L10 - B5.5 - RC

Ⓜ Alterations are not available for P Selectable Type.

Alterations	Sphere Tip	C Chamfered Size	Hex Socket Machining	Wrench Hole Machining																																																
	Code	RC	CN	RAC	LAC																																															
Spec.	Changes the relief to R0.5. Ordering Code: RC Ⓜ Applicable when D-P≥2. Ⓜ Combination with LAC is not available.	Changes C Chamfering at P dimension part to 0.5 or less. Ordering Code: CN Ⓜ Not applicable to D dimension part. Ⓜ Applicable when D≥8.	Machines hex sockets. Ordering Code: RAC <table border="1"> <thead> <tr> <th>D</th> <th>Applicable Dimensions</th> <th>Hex Hole Dimensions</th> </tr> <tr> <th></th> <th>P</th> <th>B E S</th> </tr> </thead> <tbody> <tr><td>8</td><td>7.00~</td><td>9.0~ 2 3</td></tr> <tr><td>10 10T</td><td>8.00~</td><td></td></tr> <tr><td>12 12T</td><td>11.00~</td><td>2.5 4</td></tr> <tr><td>13 13T</td><td>14.00~</td><td>3 5</td></tr> <tr><td>16 16T</td><td>14.00~</td><td></td></tr> <tr><td>20 20T</td><td>15.00~</td><td>4 6</td></tr> </tbody> </table>	D	Applicable Dimensions	Hex Hole Dimensions		P	B E S	8	7.00~	9.0~ 2 3	10 10T	8.00~		12 12T	11.00~	2.5 4	13 13T	14.00~	3 5	16 16T	14.00~		20 20T	15.00~	4 6	Machines wrench holes. Ordering Code: LAC <table border="1"> <thead> <tr> <th>D</th> <th>Applicable Dimensions</th> <th>Wrench Hole Dimensions</th> </tr> <tr> <th></th> <th>B</th> <th>P Q</th> </tr> </thead> <tbody> <tr><td>8</td><td></td><td>6.00~9.99 2</td></tr> <tr><td>10 10T</td><td>8.0~</td><td>10.00~15.99 3.5</td></tr> <tr><td>12 12T</td><td></td><td>16.00~ 5</td></tr> <tr><td>13 13T</td><td>9.0~</td><td></td></tr> <tr><td>16 16T</td><td></td><td></td></tr> <tr><td>20 20T</td><td>10.0~</td><td></td></tr> </tbody> </table>	D	Applicable Dimensions	Wrench Hole Dimensions		B	P Q	8		6.00~9.99 2	10 10T	8.0~	10.00~15.99 3.5	12 12T		16.00~ 5	13 13T	9.0~		16 16T			20 20T	10.0~	
	D	Applicable Dimensions	Hex Hole Dimensions																																																	
	P	B E S																																																		
8	7.00~	9.0~ 2 3																																																		
10 10T	8.00~																																																			
12 12T	11.00~	2.5 4																																																		
13 13T	14.00~	3 5																																																		
16 16T	14.00~																																																			
20 20T	15.00~	4 6																																																		
D	Applicable Dimensions	Wrench Hole Dimensions																																																		
	B	P Q																																																		
8		6.00~9.99 2																																																		
10 10T	8.0~	10.00~15.99 3.5																																																		
12 12T		16.00~ 5																																																		
13 13T	9.0~																																																			
16 16T																																																				
20 20T	10.0~																																																			
	Ⓜ Applicable when D≥8. Ⓜ Applicable to P, L, B Dimension Configurable Type only. Ⓜ Combination with LAC is not available.		Ⓜ Applicable when D≥8. Ⓜ Applicable to P, L, B Dimension Configurable Type only. Ⓜ Combination with RC and RAC is not available.																																																	